

Cam, Cupboard & Cabinet Locks



We take the worry out of
protecting what's valuable to you.
Lockwood: *no worries*[®]

LOCKWOOD

ASSA ABLOY

25YEAR

**MECHANICAL
WARRANTY**

www.lockweb.com.au

Contents



670 Series

Cam Locks

page 3



692 Pin Tumbler

Cupboard Locks

page 6



693 Pin Tumbler

Cupboard Locks

page 8



8474 Swing Handle Lock

Cabinet / Garage Door Lock

page 10

670 Series Cam Locks



Description

The Lockwood 670 is a high quality cam lock, using the traditional Lockwood pin-tumbler cylinder mechanism. It features 90 degree rotation of the barrel, with key withdrawal in the vertical position. The use of a pin-tumbler mechanism results in a strong, durable camlock, with a wide range of keying options, allowing you to incorporate cam locks into your building's new or existing keying system.

Product Details

Cam Lock Accessories

An extensive range of accessories is available to suit different fixing requirements. These include a range of locking cams, fixing plates and spacers.

Special Keying

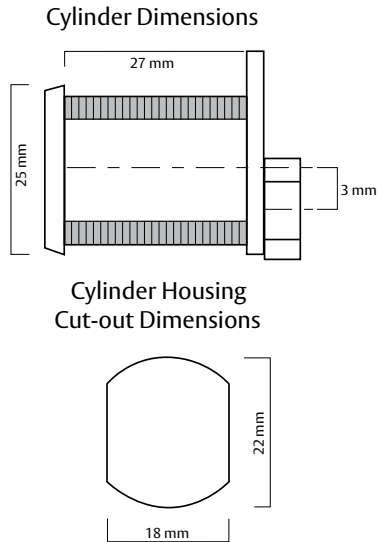
The Lockwood 670 Cam Lock is available to suit standard Lockwood keying, Lockwood Twin™ and Generation Six™ restricted keying systems.

Typical Applications

Desk drawers, storage units, cupboards, lockers and Tool boxes.

670 Series Cam Locks

Dimensions



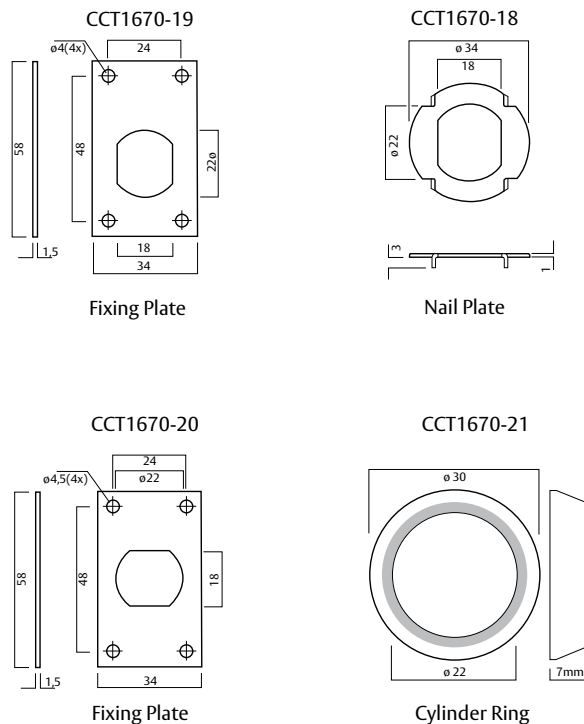
Note: Cams are not supplied with the product. Due to the range of options, all cams are ordered separately. See page 3

670 Series Cam Locks

Part Number	Description
670-20SC	Standard Keying
670G6NTEMSC	Gen Six
670/T1NTEMDPSC	Twin

Accessories

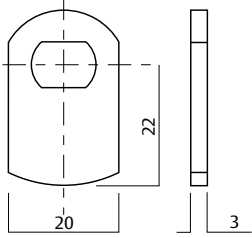
Part Number	Description
CCT1670-14	PK = 10 Retainer Limiter
CCT1670-15	PK = 10 Spring Washer
CCT1670-16	PK = 10 Nut 22X1
CCT1670-17	PK = 10 Nut 11X1
CCT1670-18	PK = 10 Nail Plate
CCT1670-19	PK = 10 Fixing Plate Vertical
CCT1670-20	PK = 10 Fixing Plate Horizontal
CCT1670-21	PK = 10 Cylinder Ring - SC
CCT1670-22	PK = 10 5mm Camlock Spacer - SC
CCT1670-23	PK = 10 10mm Camlock Spacer - SC
CCT1670-24	PK = 10 15mm Camlock Spacer - SC



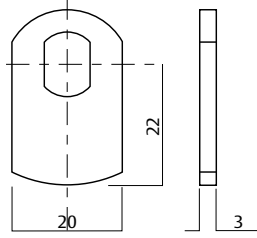
670 Series Cam Locks

670 - Lockwood Camlocks

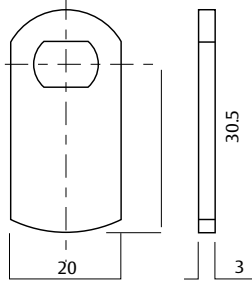
CT670/01



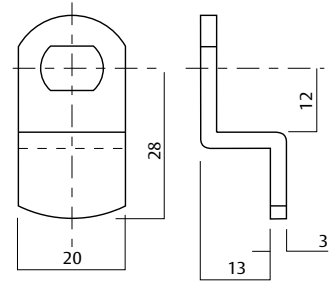
CT670/02



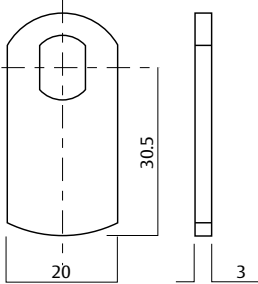
CT670/17



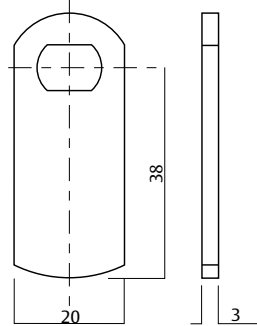
CT670/75



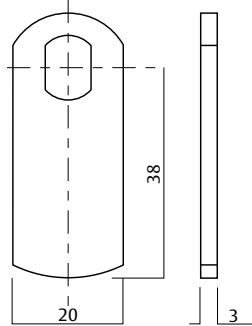
CT670/16



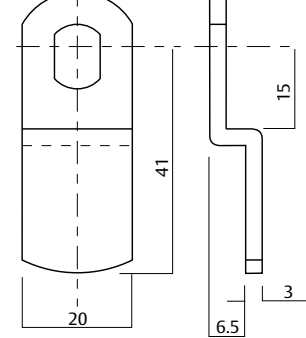
CT670/05



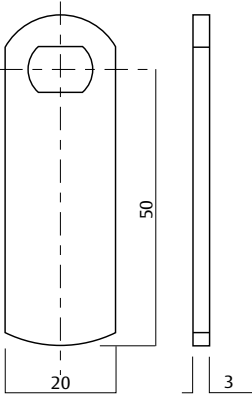
CT670/06



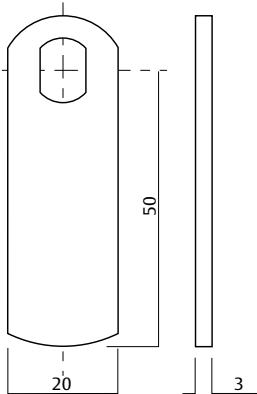
CT670/491498



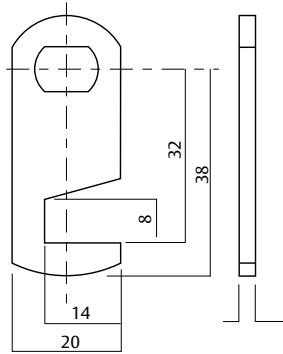
CT670/71



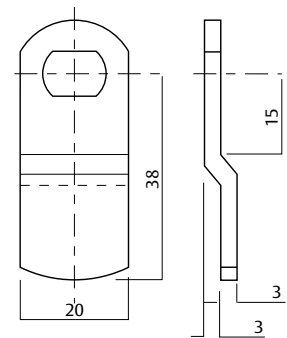
CT670/80



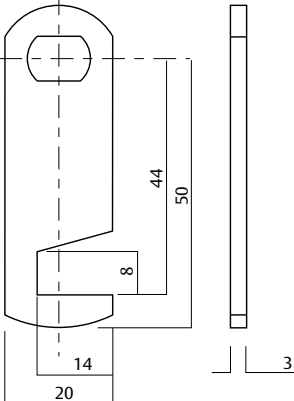
CT670/69



CT670/109



CT670/84



Cams

Part Number	PK =	Description
CT670/01	10	22mm Flat Cam H/Locking
CT670/02	10	22mm Flat Cam V/Locking
CT670/16	10	30.5mm Flat Cam V/Locking
CT670/17	10	30.5mm Flat Cam H/Locking
CT670/05	10	38mm Flat Cam H/Locking
CT670/06	10	38mm Flat Cam V/Locking

Cams

Part Number	PK =	Description
CT670/71	10	55mm Flat Cam H/Locking
CT670/80	10	55mm Flat Cam V/Locking
CT670/84	10	50mm Hook Cam H/Locking
CT670/69	10	38mm Hook Cam H/Locking
CT670/75	10	28 x 13mm Step Cam H/Locking
CT670/491498	10	41 x 6.5mm Step Cam V/Locking
CT670/109	10	38 x 3mm Step Cam H/Locking

692 Pin Tumbler Cupboard Lock



Features and Specifications

- Key-operated 4 pin tumbler cupboard lock
- Manufactured primarily from diecast zinc and brass components
- Cylinder can be readily positioned to suit either drawer or cupboard installation
- Selectable latchbolt or deadbolt function

Keying

Standard Keying

- Supplied individually keyed with two keys per lock
- 2100 key combinations
- Key blank KB232

Special Keying

Can be keyed alike. To order add KA to part number.

Product Details

Bolt	Zinc, 10mm projection.
Cylinder	4 pin tumbler mechanism Brass cylinder and brass barrel – 22 mm diameter, 23 mm projection

692 Pin Tumbler Cupboard Lock

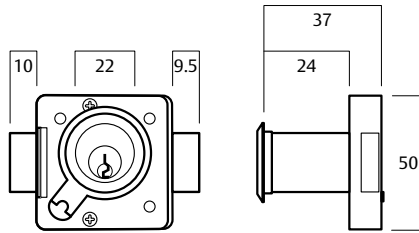
4 Pin Straight

Finish **A Position** **B Position**

Chrome Plate 692ACP 692BCP

Satin Chrome 692ASC 692BSC

Polished Brass 692APB 692BPB



Deadbolt

Latch

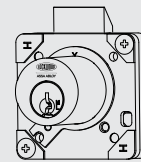
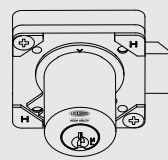
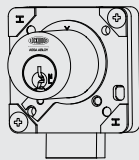
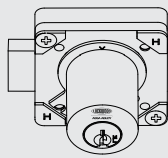
Cupboard

Drawer

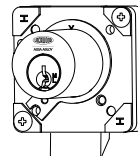
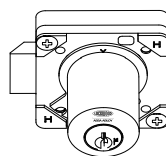
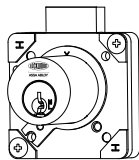
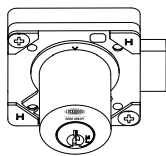
Cupboard

Drawer

A Position



B Position



693 Pin Tumbler Cupboard Locks



Features and Specifications

- Key-operated 5 pin tumbler cupboard lock
- Manufactured primarily from diecast zinc and brass components
- Cylinder can be readily positioned to suit either drawer or cupboard installation

Keying

Standard Keying

- Supplied individually keyed with two keys per lock
- 78,000 key combinations
- Key blank KB2015P
- Housing is 6 pin compatible

Restricted Special Keying

Lockwood locks can be keyed to a number of controlled and/or specially keyed systems. These range from legally protected keys to protect against unauthorised duplication, which can also include specially designed key systems such as master key systems, which allow for different levels of mechanical access control.

Please refer to section 7 for keying systems or contact your local sales office or customer service for specific information.

Product Details

Bolt	Zinc, 10mm projection.
Cylinder	5 pin tumbler mechanism Brass cylinder and brass barrel – 27mm diameter, 26.5 mm projection

693 Pin Tumbler Cupboard Locks

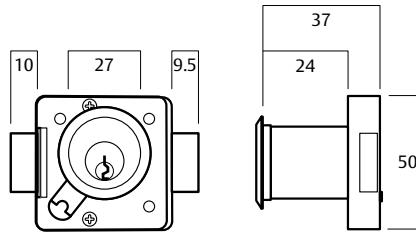
5 Pin Straight

Finish **A Position** **B Position**

Chrome Plate 693ACP 693BCP

Satin Chrome
Brushed 693ASC 693BSC

Polished Brass 693APB 693BPB



Deadbolt

Latch

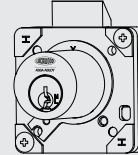
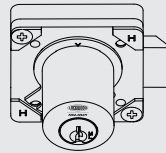
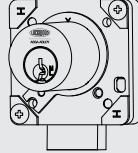
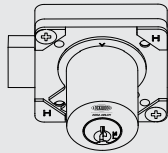
Cupboard

Drawer

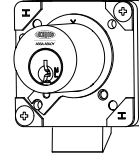
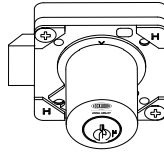
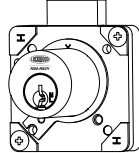
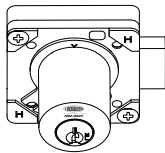
Cupboard

Drawer

A Position



B Position



8474 Swing Handle Lock



Description

A high quality swing door lock featuring lever action and easy installation. Supplied with polythene washer to fit between rose and door surface.

Suitable for use on garage doors and other sheet metal cabinets.

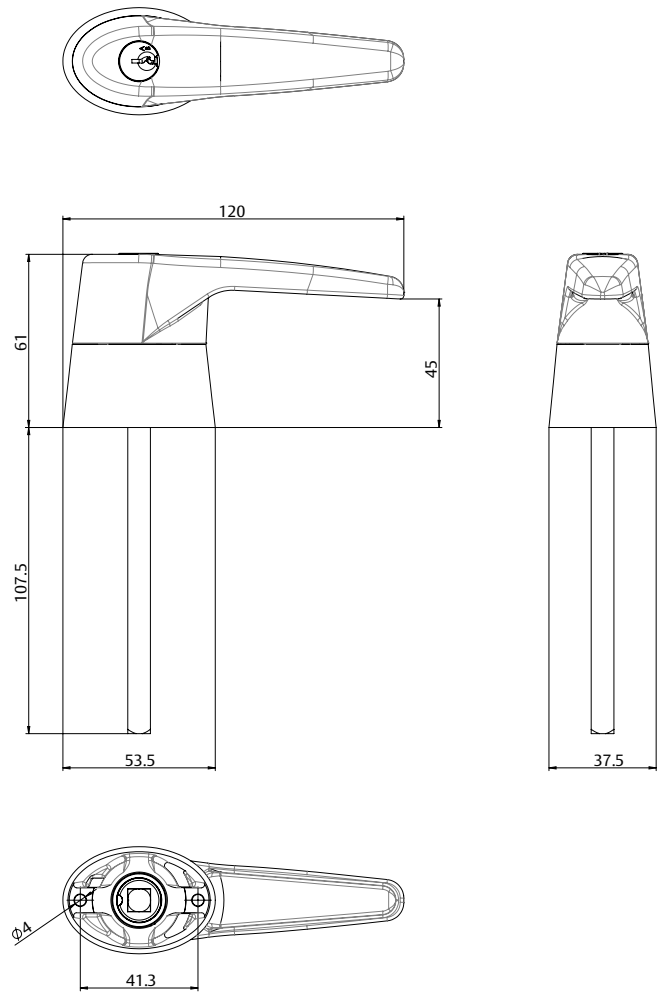
Product Details

Materials	High purity zinc (lever handle & rose), Steel (spindle)
Door Thickness	Suitable door thicknesses can vary depending on the application and cam type. The lock is supplied with two 3/16 x 2" mounting screws.
Cam	No cam is supplied with the 8474 Swing Lock. The lock has an 8 x 8mm square drive that can be used with OEM cams.
Special Keying	Lockwood locks can be keyed to a number of controlled and/or specially keyed systems. These range from legally protected keys to protect against unauthorised duplication and can also include specially designed keying systems such as master key systems. This allows for different levels of mechanical access control. Lockwood Keying Platforms – Section 7.
Standard Finishes	Chrome Plate

8474 Swing Handle Lock

8474 Swing Handle Lock

Description	Part Number
Lockwood 8474 Swing Door Lock 5 Pin Keyed to Differ Chrome Plate	8474
Lockwood 8474 Swing Door Lock MT5+ Master Keyed Chrome Plate	8474MT5+CP
Lockwood 8474 Swing Door Lock GEN6T Master Keyed Chrome Plate	8474/G6M
Lockwood 8474 Swing Door Lock Twin Master Keyed Chrome Plate	8474T1MCP
Lockwood 8474 Swing Door Lock ABLOY PROTEC2 Master Keyed Chrome Plate	8474T/CP
Lockwood 8474 Swing Door Lock ABLOY PROTEC Master Keyed Chrome Plate	8474N/CP





ASSA ABLOY

Lockwood is the leading brand in the Australian locking industry. With an established reputation for high quality products, this iconic brand provides a wide range of locking solutions to residential housing, commercial, semi-commercial, building and industrial application markets. Lockwood is supported by an extensive distribution and after-sales support network. Our customers include retailers, architects, trade and industrial personnel, locksmiths and security dealers.

ASSA ABLOY is the global leader in door opening solutions, dedicated to satisfying end-user needs for security, safety and convenience.

ASSA ABLOY is represented in all major regions, in both mature and emerging markets, with leading positions in Australia, Europe and North America.

**25YEAR
MECHANICAL
WARRANTY**

The Lockwood 25 Year Mechanical Warranty

Our belief that we manufacture the finest premium products available in today's market place is backed by the Lockwood 25 Year Mechanical Warranty, ensuring that Lockwood continues to keep Australians safe by delivering security and peace of mind.

For warranty terms and conditions, please visit www.lockweb.com.au or call **1300WARRANTY**

ASSA ABLOY Opening Solutions Australia
235 Huntingdale Road
Oakleigh, Victoria, 3166
Australia

1300 LOCK UP (1300 562 587)
lockweb.com.au

ASSA ABLOY New Zealand Ltd
6 Armstrong Road
Albany, Auckland, 0632
New Zealand

nzsales@assaabloy.com
Telephone +64 9415 7111
assaabloyopeningsolutions.nz