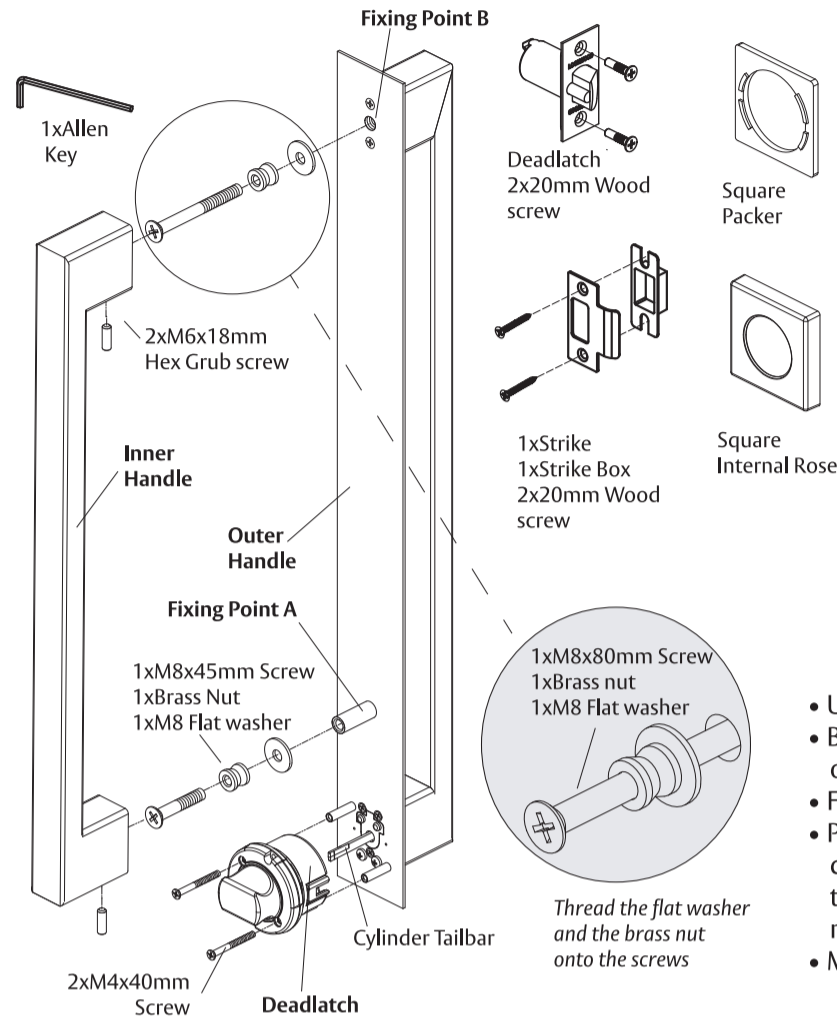


005-SPHLS55 - 1217

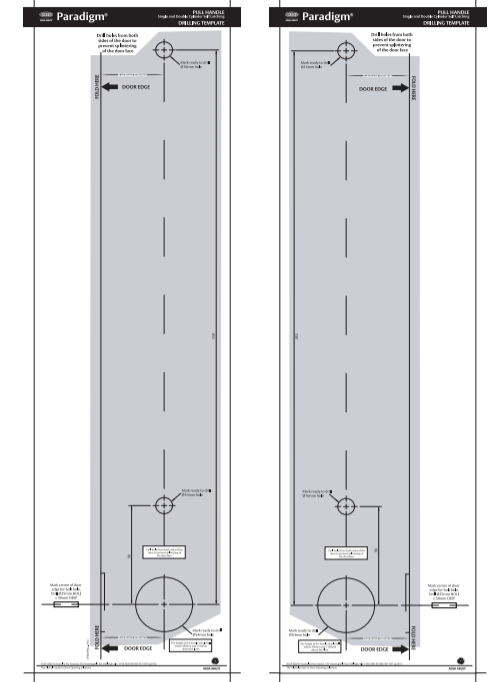
TOOLS REQUIRED

- Ø54mm Hole Saw and Drill
- Ø25mm Spade Drill Bit
- Ø16mm Drill Bit
- Pencil
- Phillips Head Screw Driver
- Centre Punch Tool/Nail
- Masking Tape
- Chisel
- Hammer
- Pliers

PARTS SUPPLIED

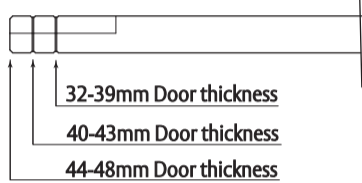


TEMPLATES



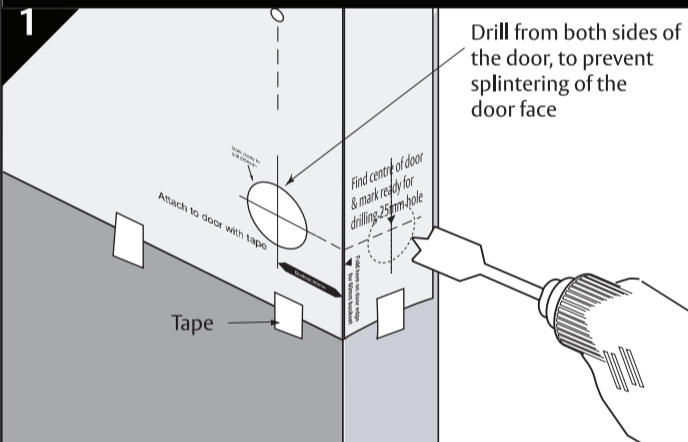
- Unfold and smooth out the Drilling templates.
- Both templates must be used. Ensure they are placed on the correct side of the door.
- Fold template where indicated.
- Position the template at the required height on the door. Ensure the fold line on the template is parallel to the door. Secure the template into place with masking tape.
- Mark the hole positions with a Centre Punch or Nail.

TRIMMING CYLINDER TAILBAR



- Measure the door thickness.
- Refer to the diagram above to determine the required length to use.
- Use pliers to snap off the Tailbar to the desired length.
- For doors 32-36mm thick use the Square Packer provided. Refer to Step 4.

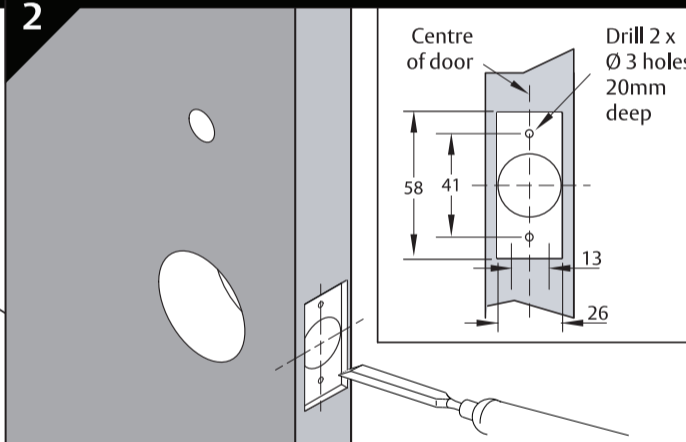
DOOR PREPARATION



- Firstly, establish the centre of the door, then using a spade bit, drill the Ø25mm bolt hole to a depth of 50mm, ensuring hole is drilled squarely.
- Drill the two Ø16mm holes for the handle.
- Lastly, drill the Ø54mm hole for the lock body. Refer to the Template.
- Remove all debris and rough edges.

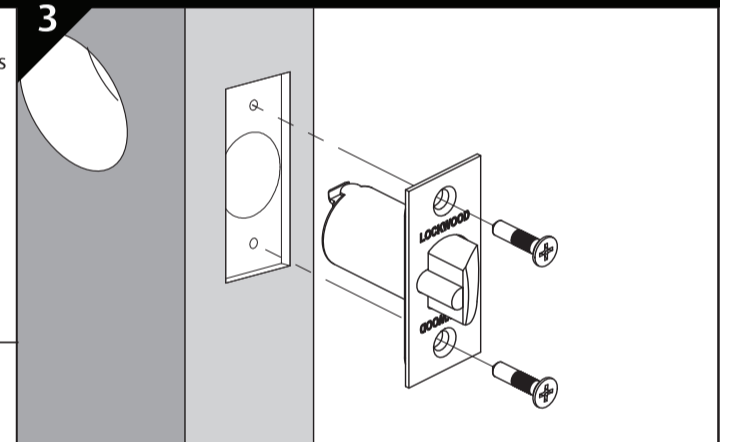
• **IMPORTANT:** Drill the holes from both sides of the door to prevent splintering of the door face.

REBATE DETAIL



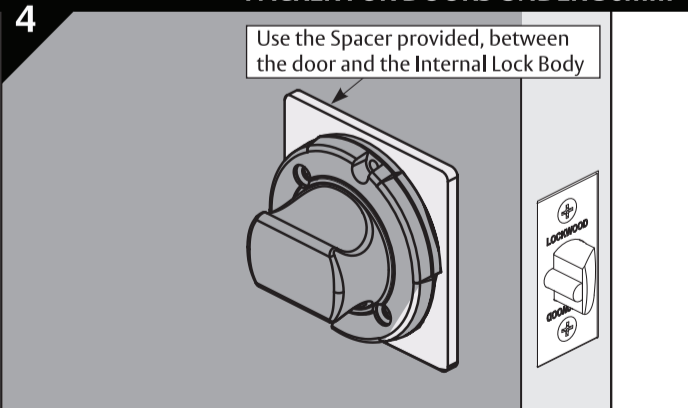
- Establish vertical and horizontal centre of Ø25 hole drilled in Step 1.
- Mark out the rebate 58mm x 26mm centrally located over the bolt hole (See inset)
- Chisel out the recess to a depth of 3.5mm.
- Mark and drill the two Ø3mm holes, 20mm deep. (See Inset)

FIXING BOLT AND FACEPLATE TO DOOR



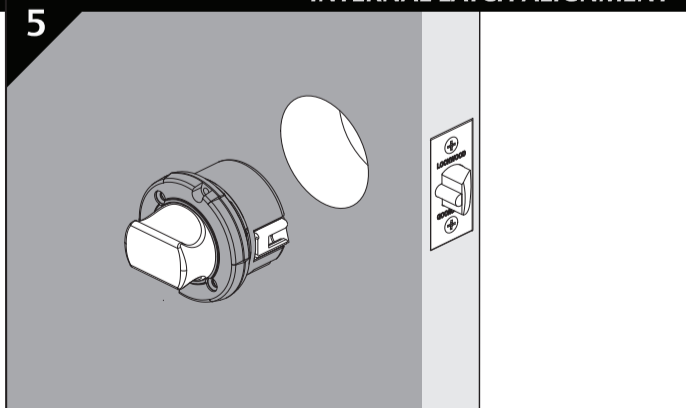
- Before fitting the bolt, make sure the surfaces are smooth and even.
- Insert the Deadlatch and Faceplate and secure with the two 20mm screws provided.

PACKER FOR DOORS UNDER 36mm



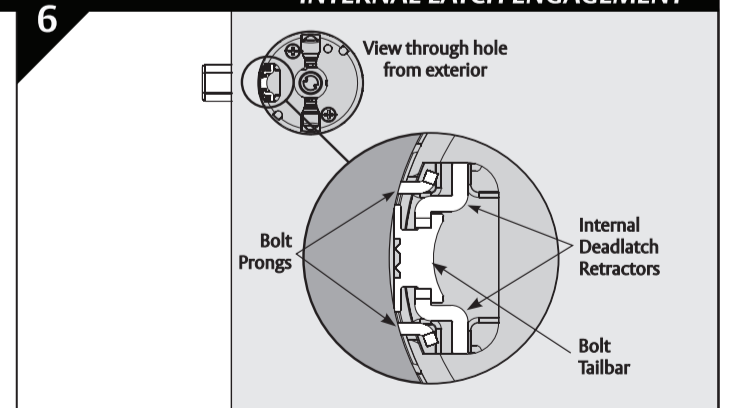
• **IMPORTANT:** If the door thickness is less than 36mm, locate the Packer (included) under the internal side of the Lock Body before assembly to the door.

INTERNAL LATCH ALIGNMENT

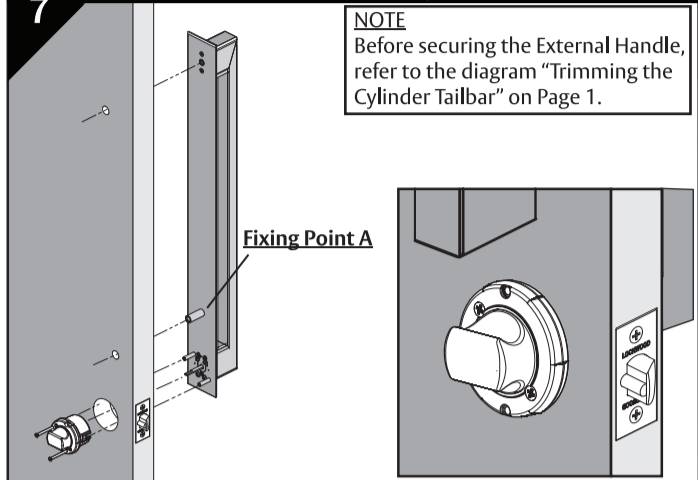
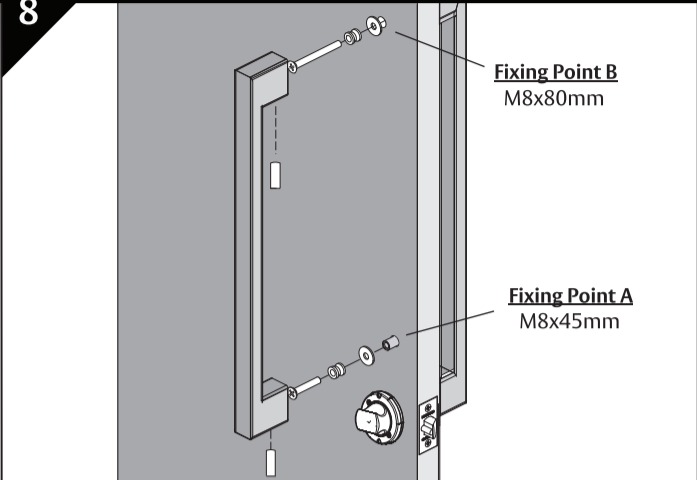
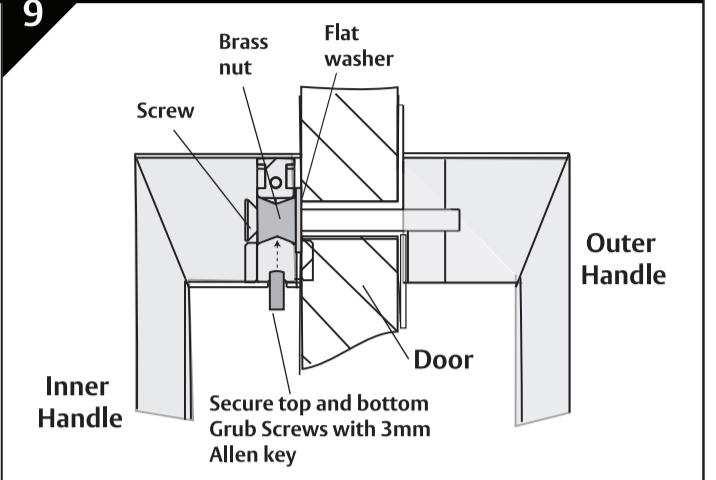
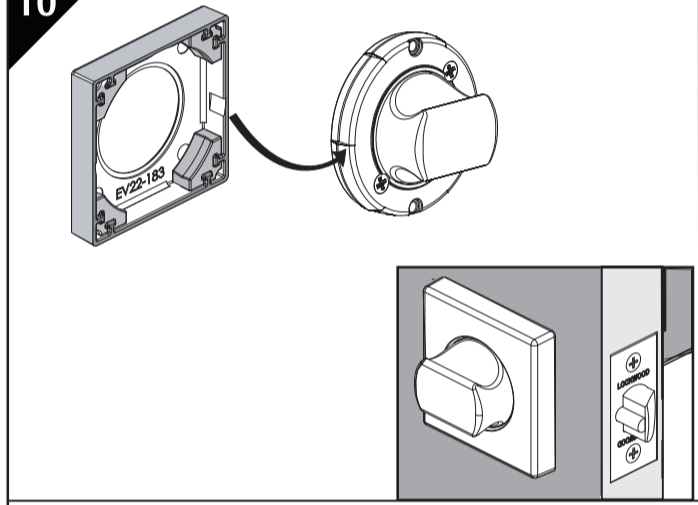
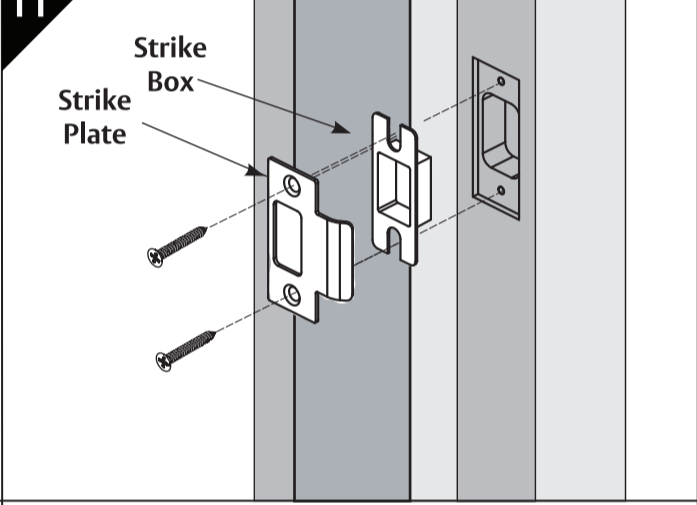
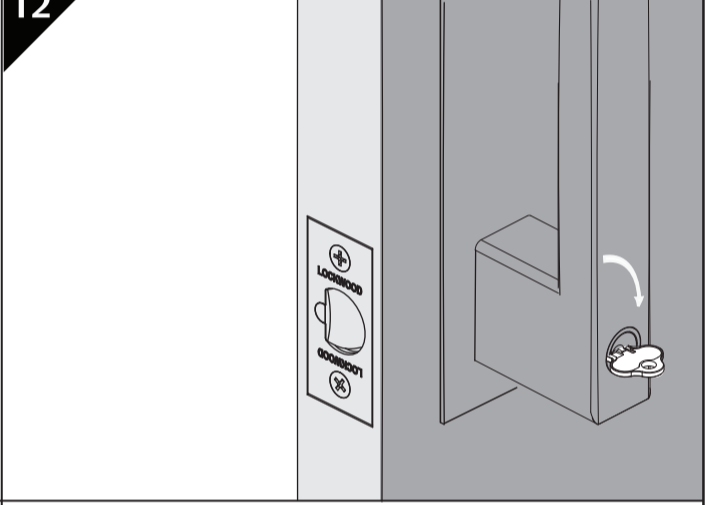


- Rotate the turn knob into the horizontal position. Ensure the Latch Retractors face the edge of the door.
- Insert the Internal Lock Body into the door as shown.

INTERNAL LATCH ENGAGEMENT



- Ensure that the Bolt Prongs, Bolt Tailbar, and the Internal Deadlatch Retractors engage together as shown.

7 ATTACH EXTERNAL HANDLE / SECURE LOCK BODY	8 ATTACH INTERNAL HANDLE	9 SECURE GRUB SCREWS
 <p>NOTE Before securing the External Handle, refer to the diagram "Trimming the Cylinder Tailbar" on Page 1.</p> <p>Fixing Point A</p>	 <p>Fixing Point B M8x80mm</p> <p>Fixing Point A M8x45mm</p>	 <p>Brass nut Flat washer Screw Inner Handle Outer Handle Door Secure top and bottom Grub Screws with 3mm Allen key</p>
<ul style="list-style-type: none"> • Insert lower handle Fixing Point A threaded post into the 16mm hole shown. • Secure the lock body with M4x40mm screws supplied. • Check that deadlatch operates smoothly and fully by turning the turn knob. 	<ul style="list-style-type: none"> • Slide the brass nut and flat washer onto the M8x45mm screw for Fixing Point A. • Hold the outer handle, tighten the brass nut, until finger tight, use a screw driver to fully tighten screw. • Then repeat the same for Fixing Point B, with M8x80mm screw provided. 	<ul style="list-style-type: none"> • Secure the Grub screws into place with the Allen key provided.
10 SQUARE ROSE ASSEMBLY	11 FITTING STRIKE BOX AND STRIKE PLATE	12 FUNCTION CHECK
	 <p>Strike Box Strike Plate</p>	
<ul style="list-style-type: none"> • Align the horizontal notches in the Square rose with the corresponding notches on the Lock body. • Press the Square rose onto the Lock body. 	<ul style="list-style-type: none"> • Partially close the door and mark the position of the bolt on the door jamb. Mark and mortise door jamb to suit the Strike box and Strike. The recommended gap between the door and jamb is 3mm. Mark and drill 2x3mm holes 20mm deep for the strike screws. • Insert the Strike box and Strike plate in position and secure with the 2x20mm screws provided. 	<ul style="list-style-type: none"> • Check that deadlatch operates smoothly and fully by turning the Internal knob and the key 90° outside.