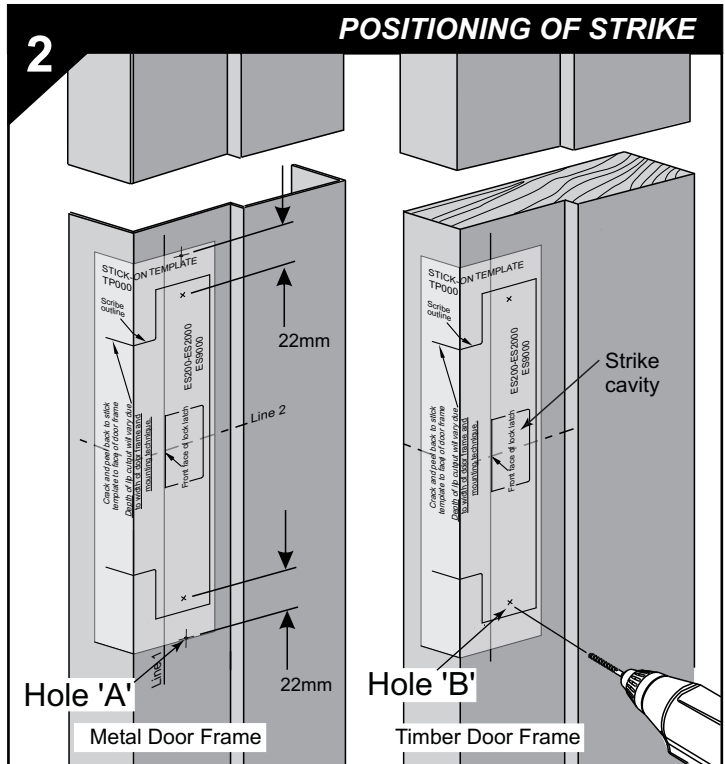
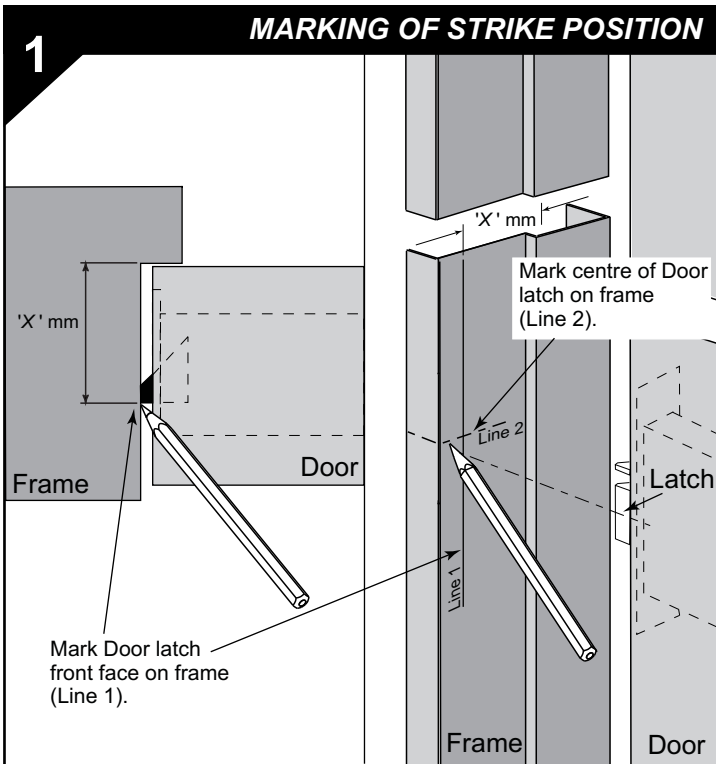
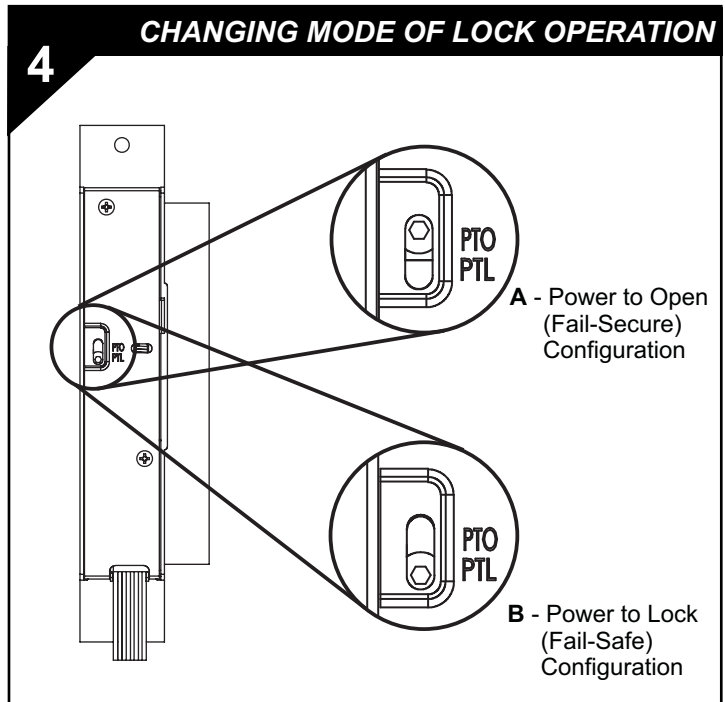
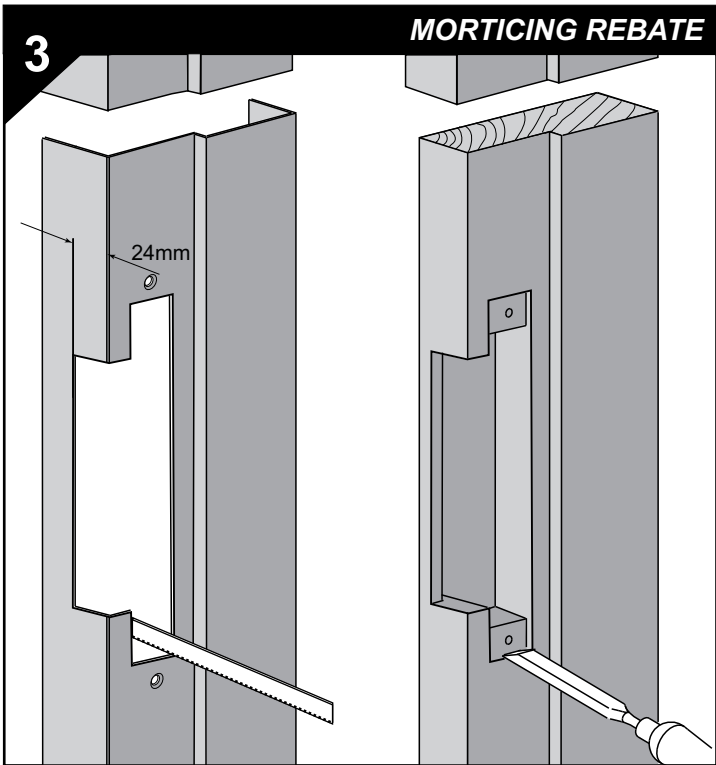


Part No. ES9000-121  
30621 1008



- To enable the Electric strike to be located in the door frame, first mark the position of the Door Latch front face on the door frame with the door in the closed position, ('X' mm).
- Mark where centre of latch meets door frame:
  - For new installations, mark frame where front of latch touches the door frame at the midpoint of the latch bolt.
  - For retrofit installations, remove existing strike plate and ensure that latch fits into and is centred in existing hole.

- Peel backing off adhesive template and centrally locate in the marked position, lining up both the mark for the door latch front face (Line 1) and the centre mark of the latch (Line 2).
- For a metal door drill two Ø5mm holes (A) 22mm above and below the 'x' mark on the template, for a timber door drill two Ø3mm holes (B).
- Ensure secondary bolt is not within strike cavity.



- Using the template as a guide, mortice out the door frame to the required size.
- Countersink holes in metal frame to accept screws.
- For wider framed doors an Extension Lip may be required. Refer to over leaf for sizes and part numbers.

- **Power to Lock (PTL) to Power to Open (PTO) conversion.** Loosen mode change screw two turns with the supplied 2mm hex key. Factory default setting is Power to Lock (PTL)
- Move to required position as shown:  
Power to Open Fig. A  
Power to Lock Fig. B
- Retighten mode change screw firmly.

**CAUTION!** Incorrect supply voltage may cause damage not covered by warranty.  
Please check supply voltage with a suitable meter to ensure it is within 10-30V DC.

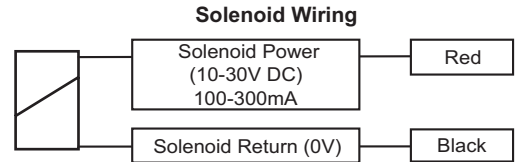
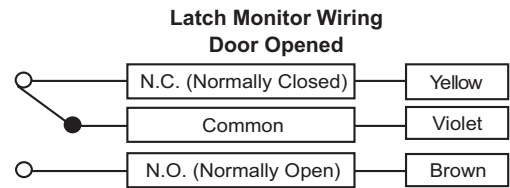
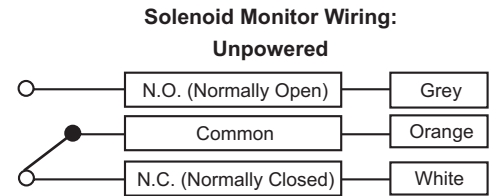
Current required is 250mA @12V DC to 130mA @ 24V DC

DO NOT OIL OR LUBRICATE.

**9000 Series Microswitch Monitoring**

The 9000 Series Electric Strike has back EMF protection built into the product. No external protection diode is required.

The wiring diagram for the monitoring schematic is shown in Fig. 4 and on the back of the strike.



**Fig. 4 - Monitoring Schematic**

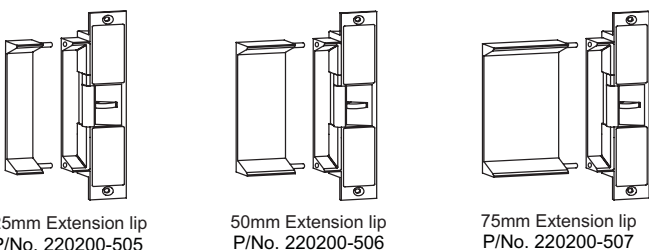
**5 ASSEMBLING STRIKE**

- For metal door frames fit door mounting brackets.
- Once door frame preparation is complete, temporarily fit strike into door frame to check for interference. Check that the door closes smoothly and that the latch extends fully past the strike keeper.
- When strike operates correctly with latch, remove strike from mortice and connect wiring.

**6 CHECKING FUNCTION**

**TUBULAR LATCH OPERATION**  
To ensure deadlatching, ensure that the deadlatching pin is depressed by the edge of the keeper when the door is closed.

- Refit strike and secure, making sure no wires are being crushed.
- Check both mechanical and electronic operation works correctly.



The installation of a Strike guard is recommended on outward opening external doors.

**5 Year Limited Warranty**

ASSA ABLOY Australia guarantees for a period of 5 years in accordance with Trimec's Standard Warranty Conditions, against defects in manufacture, workmanship or materials, provided that all electrical and mechanical installation requirements are adhered to as per this datasheet. All third party and consequential claims are expressly excluded from the warranty.



WARRANTY  
**TRIMECARE**

