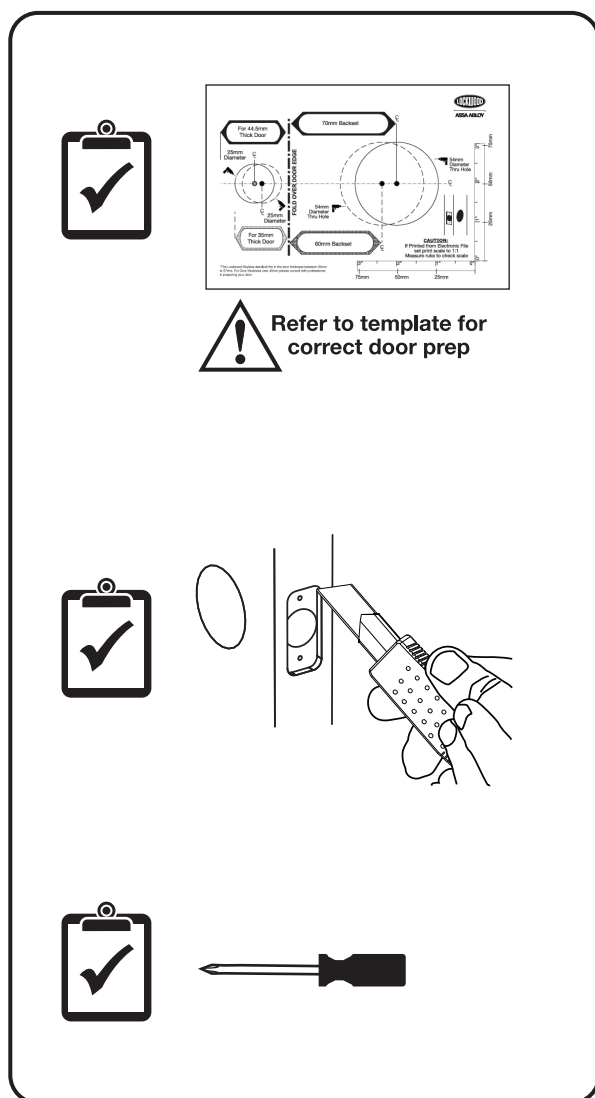
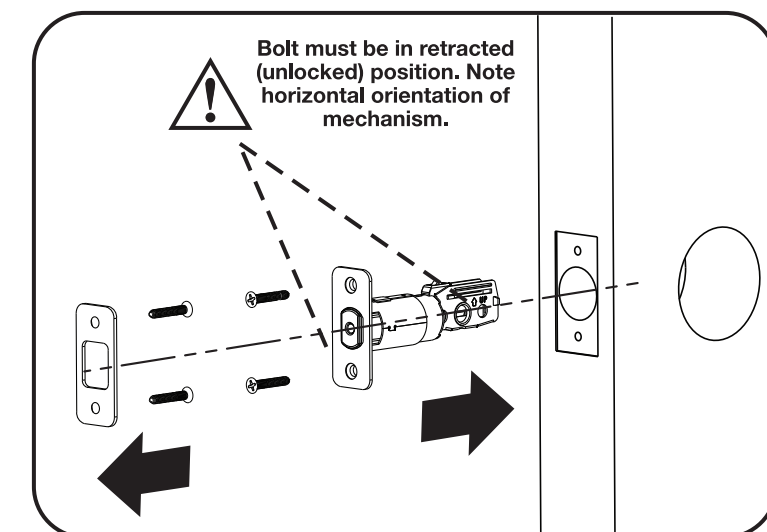
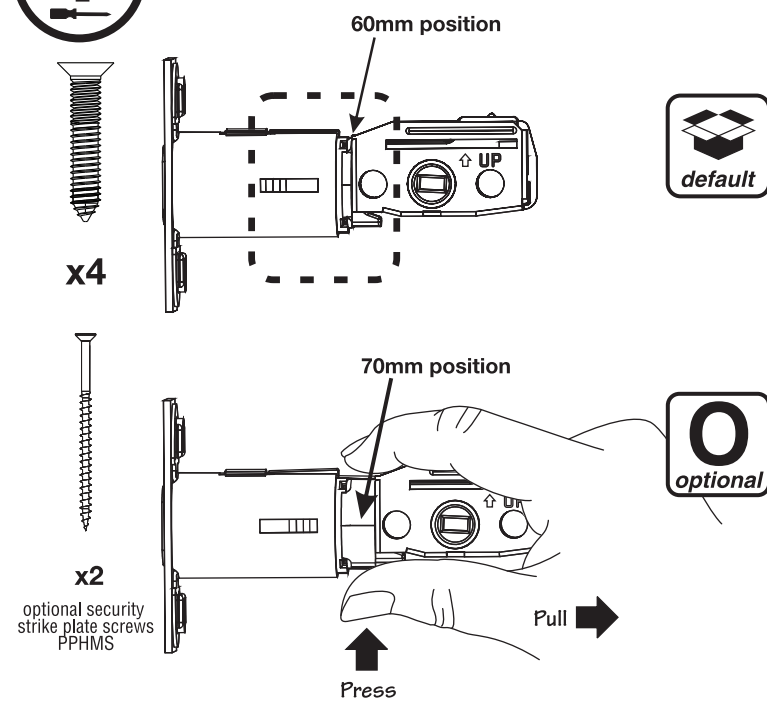




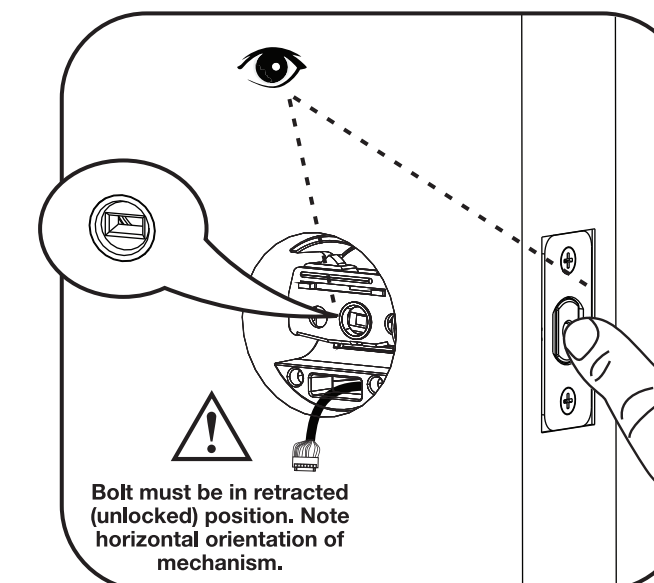
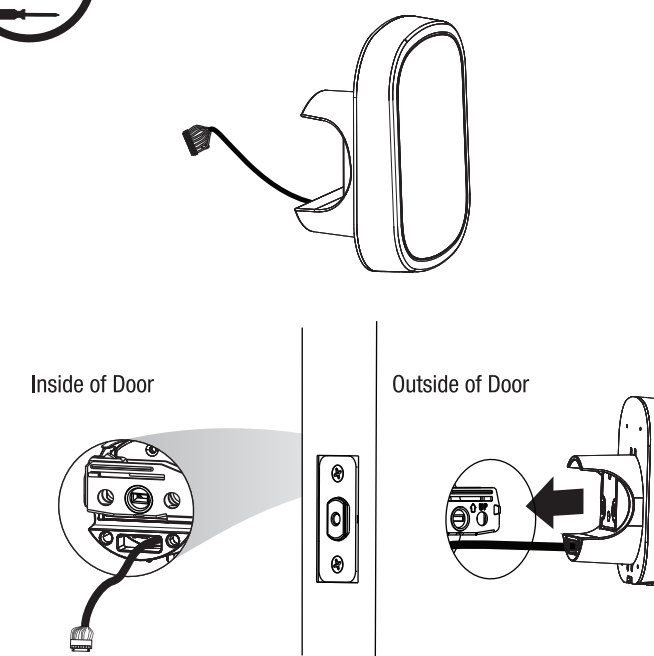
Preparing Door



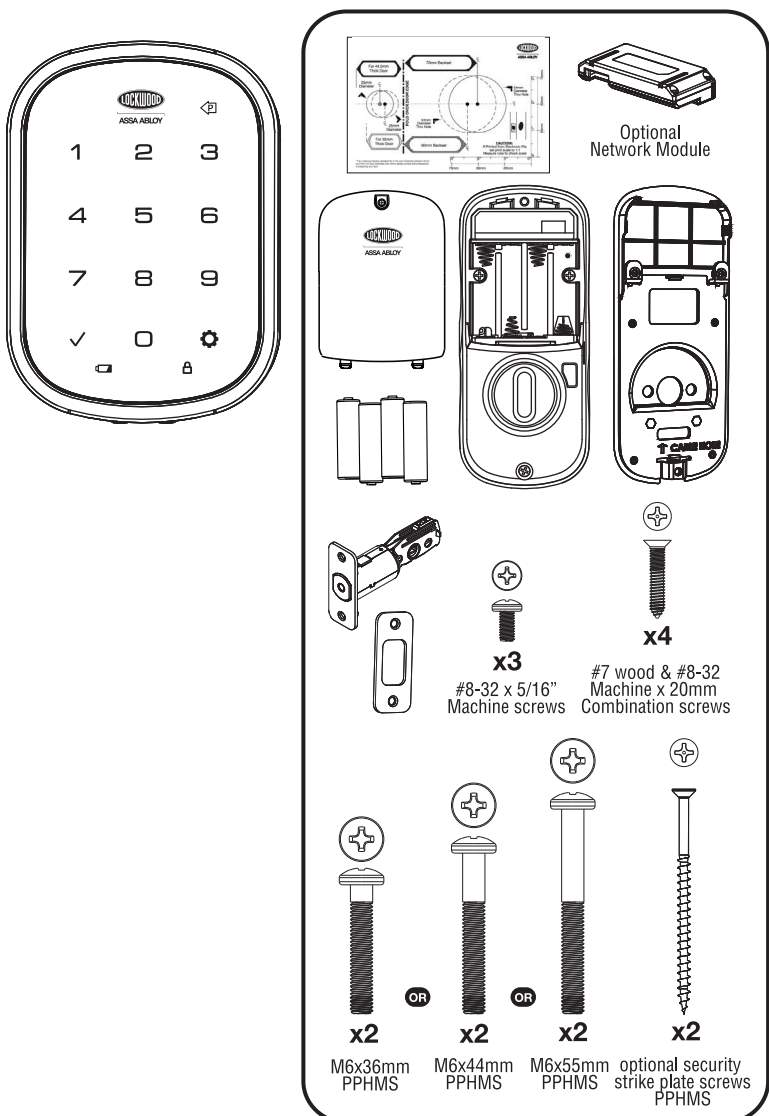
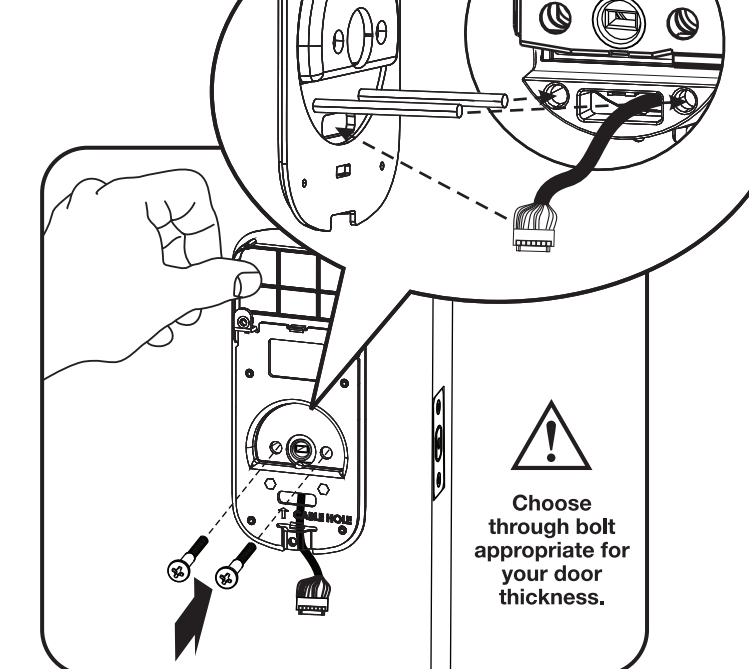
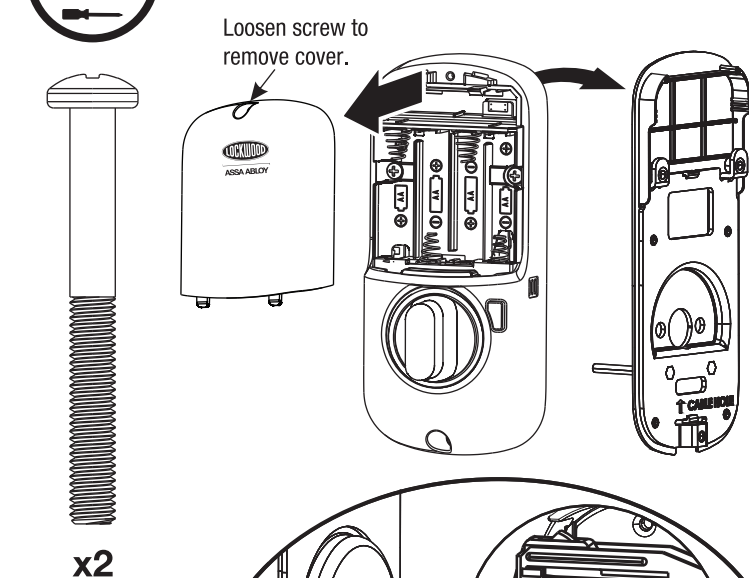
1 Installing Latch & Strike Plate



2 Installing Touchscreen Escutcheon

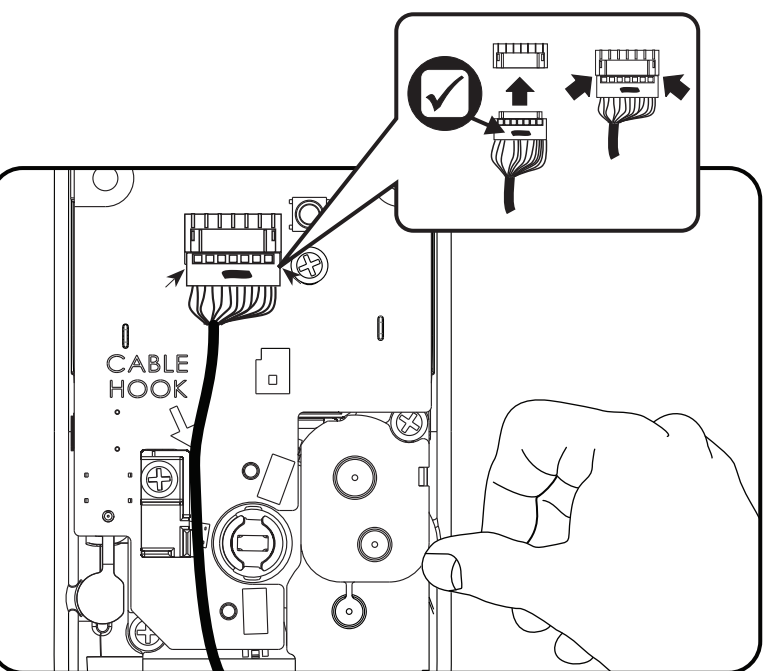
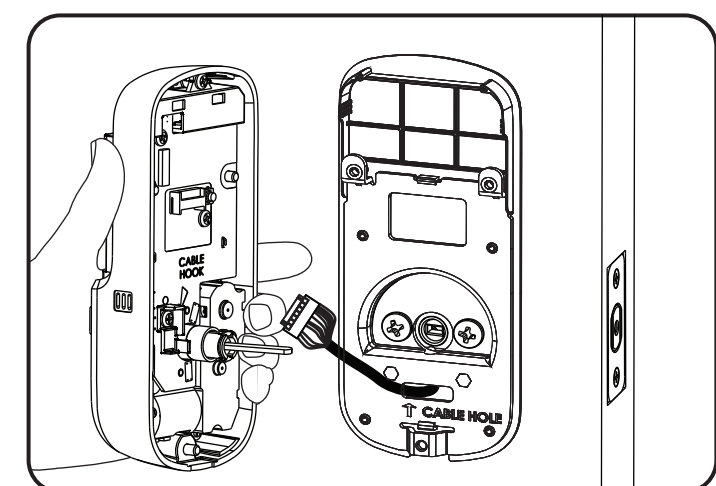


3 Installing Interior Mounting Plate

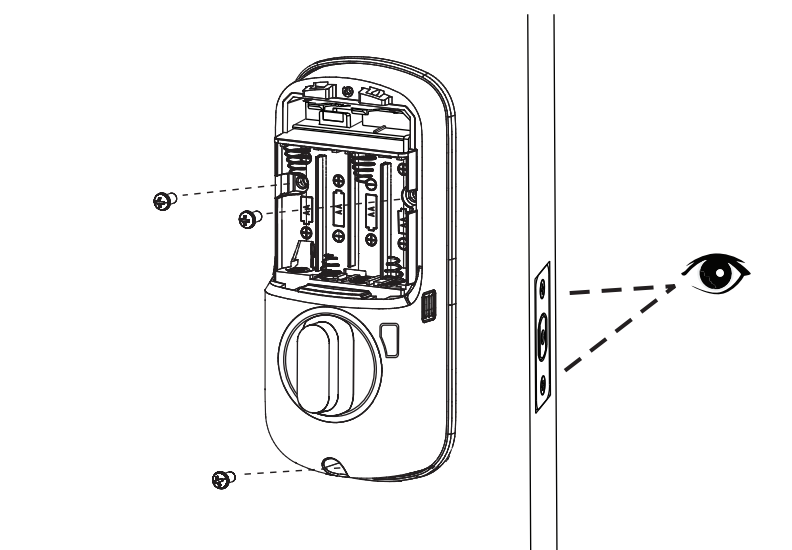
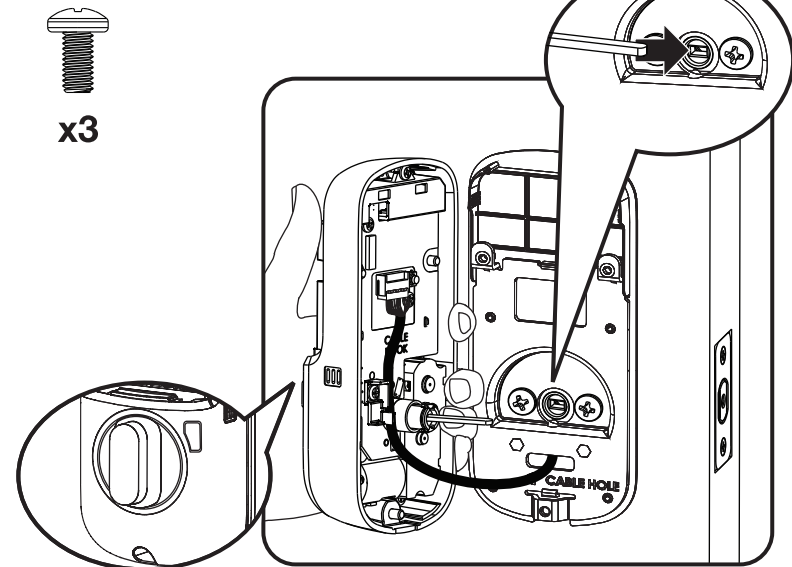


FAILURE TO FOLLOW THESE INSTRUCTIONS COULD RESULT IN DAMAGE TO THE PRODUCT AND VOID THE FACTORY WARRANTY

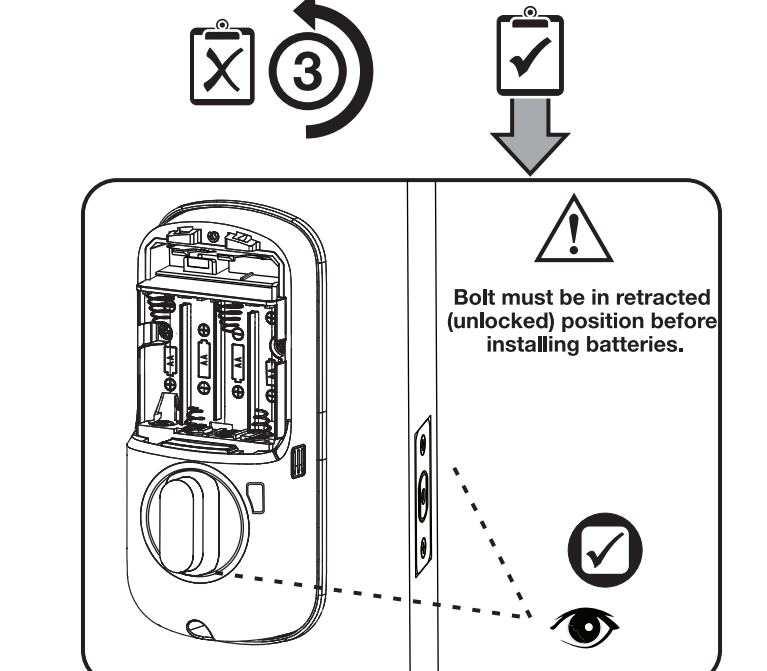
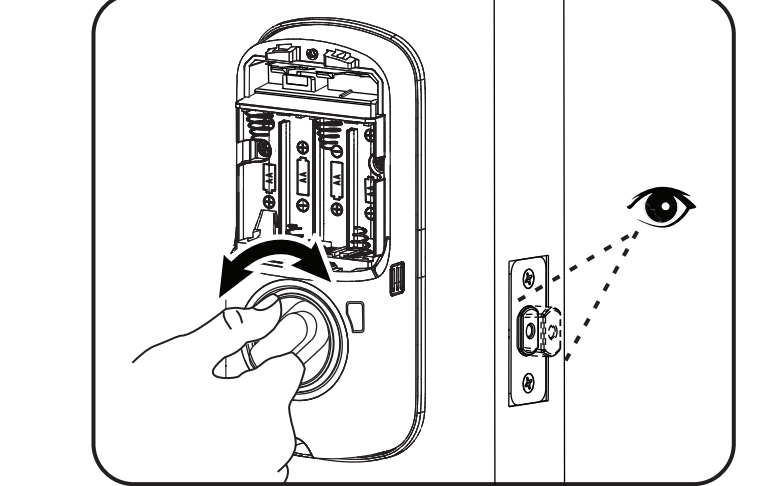
4 Attaching the Cable Assembly



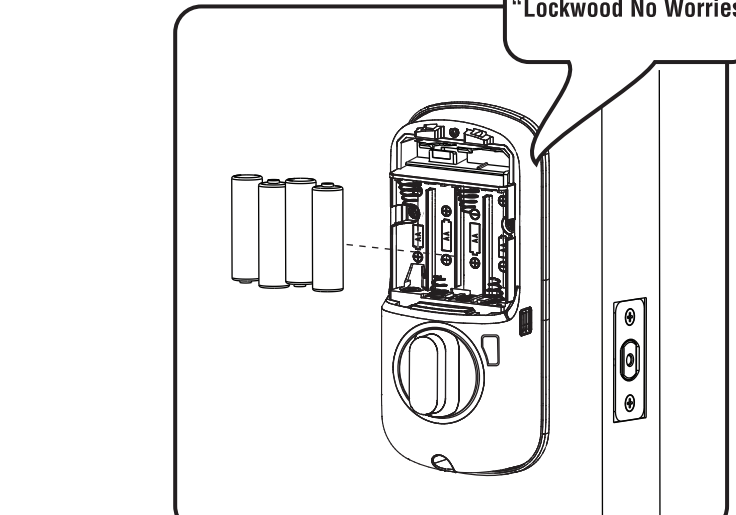
5 Installing Interior Escutcheon



Testing Operation

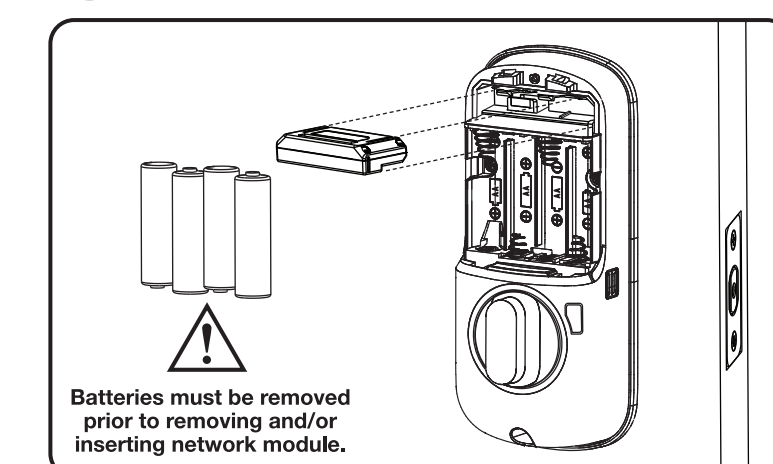


6 Installing Batteries/Handing the Lock

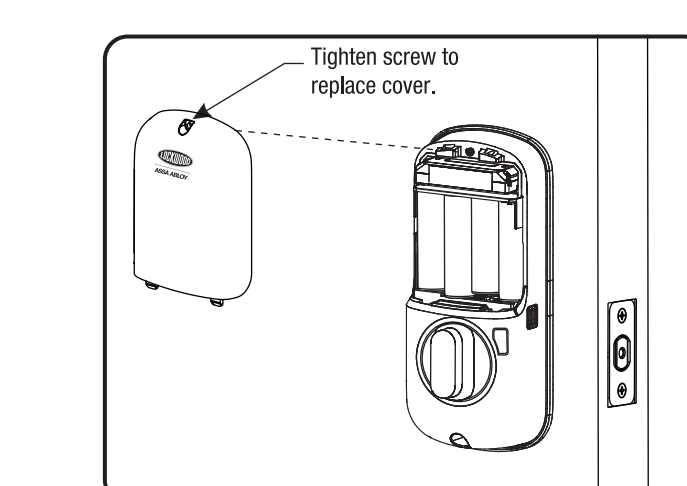


Lock automatically adjusts for proper handing.

7 Installing Optional Network Module



8 Installing Cover



Congratulations, you've installed the Lockwood Keyless Touchscreen Deadbolt. Turn sheet over to Programming Instructions to customise your product.

