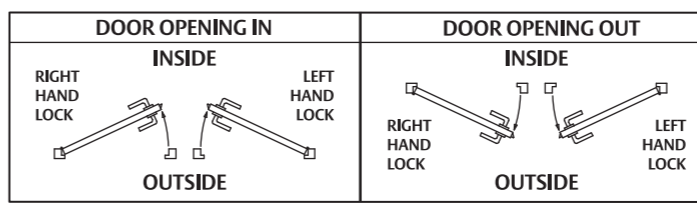
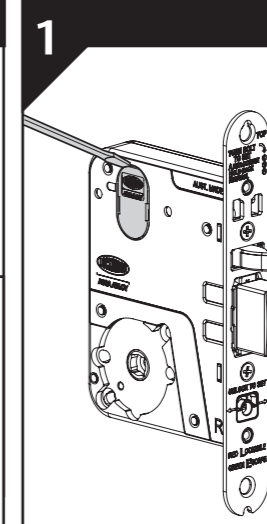


HAND OF DOOR ACCORDING TO ENGLISH PRACTICE



- Determine hand of lock required from chart above.
- Ensure only holes required by handing, function and furniture are cut into door.
- Disregard instructions referring to features not required.
- The lock is supplied in passage mode. The hold back and anti-lockout functions are de-activated.

LOCK SETTING

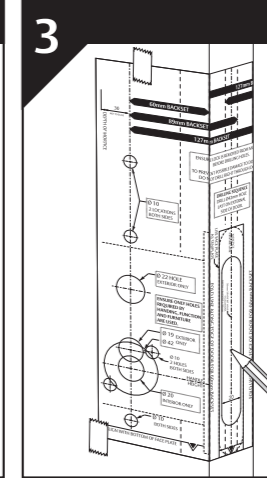


- Where cylinders or turn knobs are required, remove the cylinder plugs from the lock using a small screwdriver.
- Set the required lock function as per **SETTING AND OPERATING INSTRUCTIONS** and the **FUNCTION CHART** on the reverse of this instruction.

LATCHING ADAPTOR INSTALLATION

- Selector Series II mortice lock must use latching adaptor as shown on the right.
 - Depress the latch bolt, fit the latching adaptor.
 - Secure by pressing in the cylinder retaining pin.
- Note:** The face plate must be fitted to ensure correct function.

DOOR PREPARATION

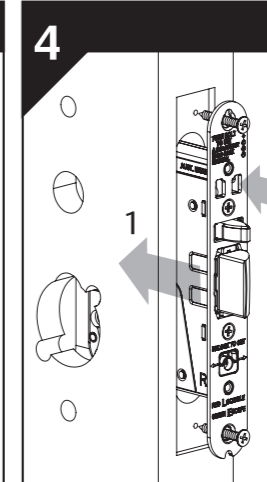


- Establish height that lock will be on the door.
- Cut mortise in door as per sizes shown on template.
- Starting on the lower cylinder side, drill required furniture and DX code pad holes from both sides of door.

DOOR PREPARATION continued

- Fit the lock into the mortise and use the face plate as a template.
- Remove lock and cut 4mm deep recess for the face plate.

LOCK INSTALLATION

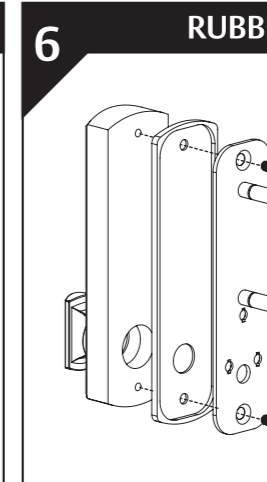


- Place lock in mortice.
- Drill 2.5mm pilot holes and secure using 30mm long screws provided.
- To hand the latch bolt, pull latch bolt forward and rotate to required handing.

SPINDLE PREPARATION

- Fit DX spindle into latching adaptor.
- Cut the spindle to allow a 22mm protrusion past the door face.

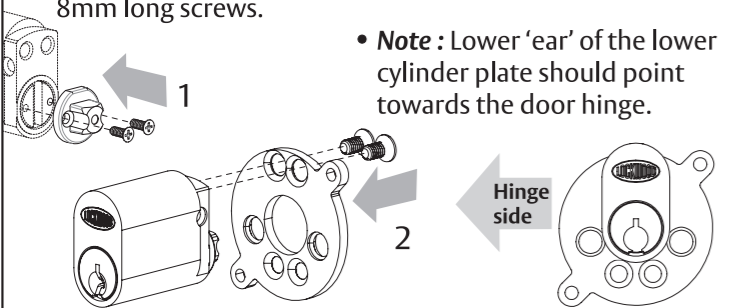
RUBBER MOUNTING PAD INSTALLATION



- Fit the rubber mounting pad onto the mounting plate and then secure to the DX digital unit using supplied 10mm long screws.

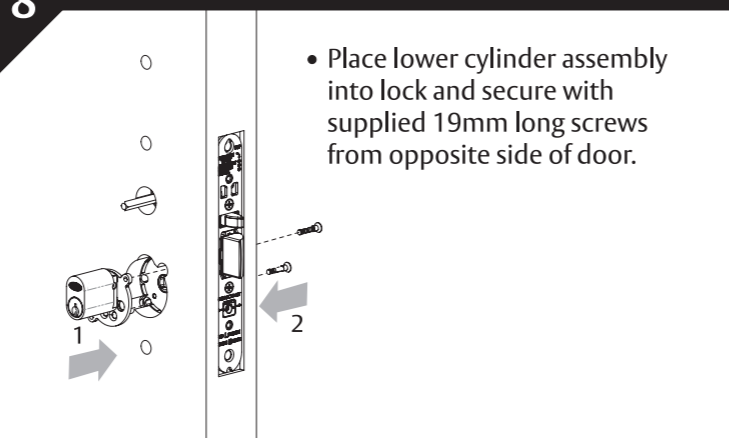
7 LOWER CYLINDER PREPARATION

- Fit spindle to cylinder using cylinder cam screws.
- Fit cylinder to lower cylinder plate using supplied 8mm long screws.
- **Note :** Lower 'ear' of the lower cylinder plate should point towards the door hinge.



8 LOWER CYLINDER INSTALLATION

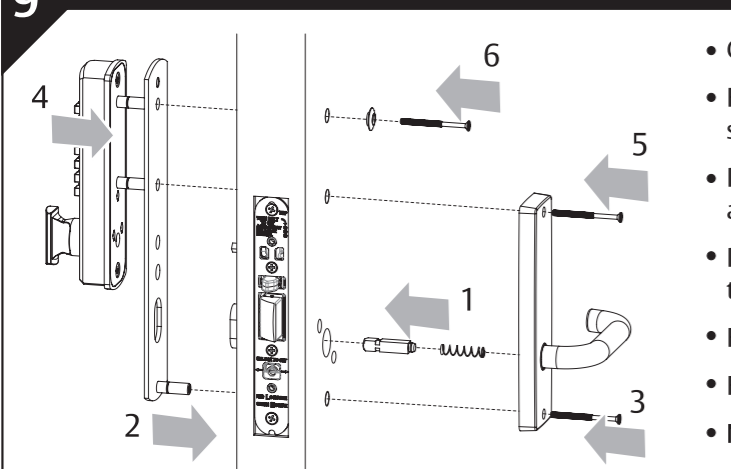
- Place lower cylinder assembly into lock and secure with supplied 19mm long screws from opposite side of door.



TEAR HERE

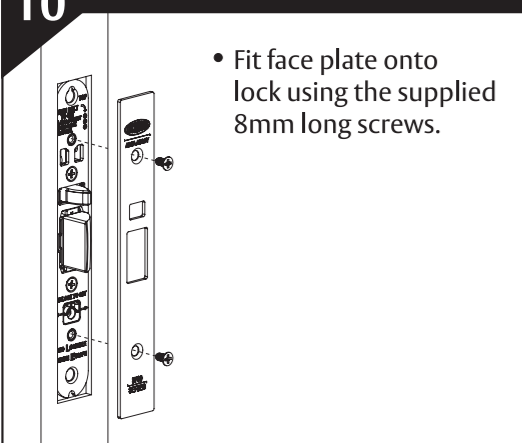
9 DX DIGITAL AND FURNITURE INSTALLATION

- Cut 3 screws to a length of **door thickness minus 3mm**.
- Fit the spindle, spring and internal furniture onto the internal side of the door.
- Place the black mounting plate onto the external side of the door and secure with the lower furniture screw.
- Place the DX digital onto the external side of the door, ensure the spindle is engaged in the DX digital handle.
- Fasten furniture using top screw.
- Fasten the DX digital using the top screw and cup washer.
- **Note :** The face plate must be fitted to ensure correct function.



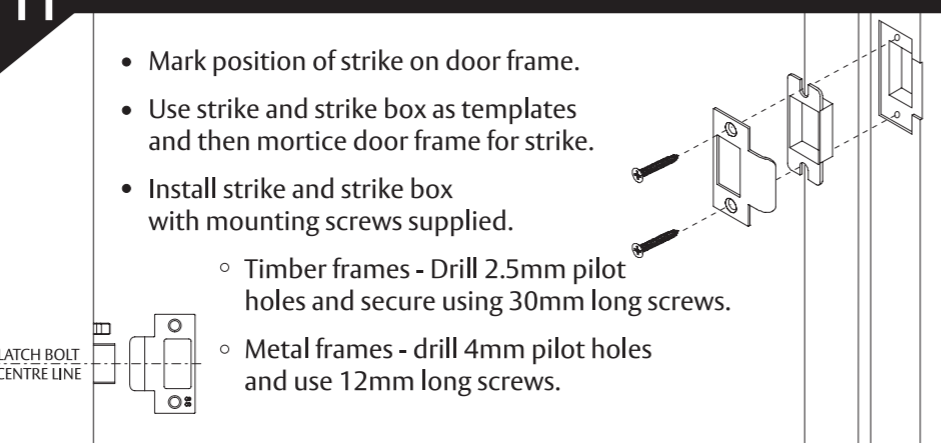
10 FACE PLATE INSTALLATION

- Fit face plate onto lock using the supplied 8mm long screws.



11 STRIKE INSTALLATION

- Mark position of strike on door frame.
- Use strike and strike box as templates and then mortise door frame for strike.
- Install strike and strike box with mounting screws supplied.
 - Timber frames - Drill 2.5mm pilot holes and secure using 30mm long screws.
 - Metal frames - drill 4mm pilot holes and use 12mm long screws.



Function description	External cam or adaptor	Hub setting	Lock function setting	Locking bar position	Internal cam or adaptor
3772DXKO- DX mechanical digital lock with key override DX Digital and lower cylinder outside, plate furniture inside. Outside : Opened by DX Digital with code or key at all times. Inside : Opened by handle at all times.	 Latching adaptor	 Green Green	 Neutral	 Unlocked	

TEAR HERE