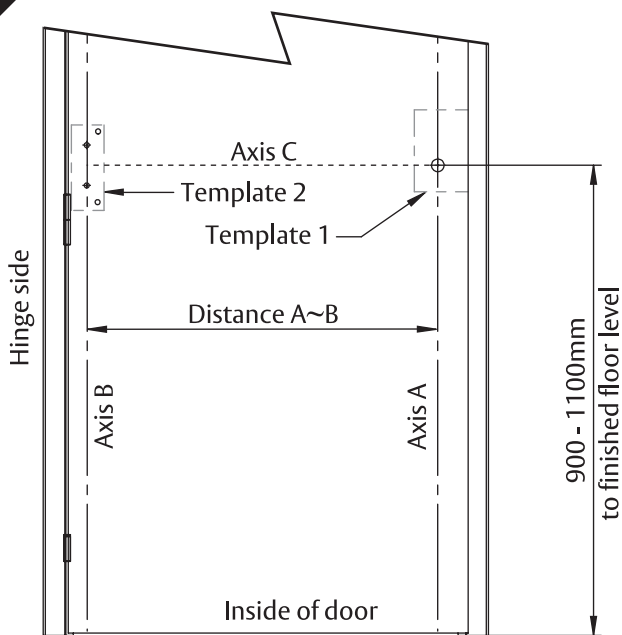


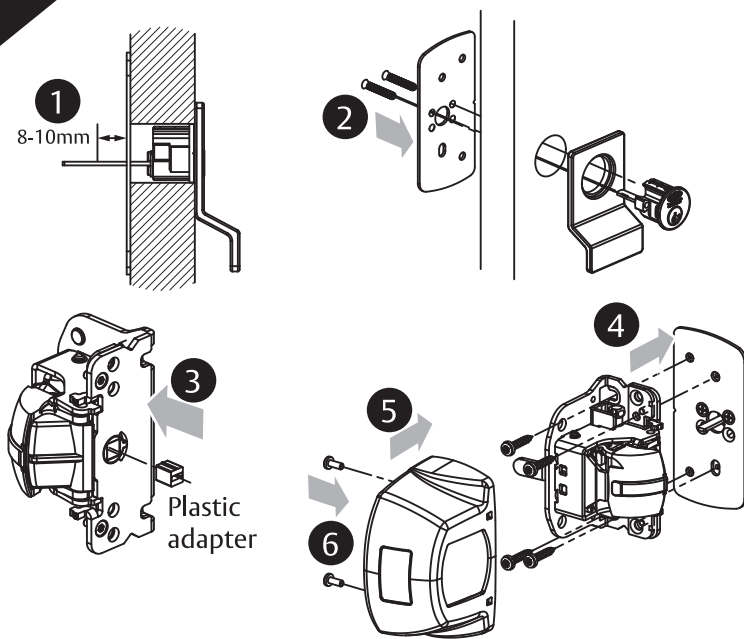
DOOR PREPARATION

1

FOR TIMBER REBATED DOORS ONLY*

- Determine height of panic exit device:
For new installations, 900 - 1100mm above FFL is recommended.
- Using template 1 provided, complete nightlatch door preparation.
- Axis B should be greater than 50mm from the door frame. Ensure distance A~B is no more than 80mm longer than supplied panic exit device extrusion. Drill pilot holes on hinge side of door using Template 2.

2

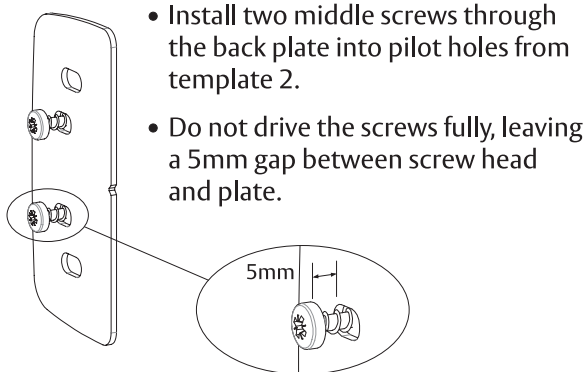
PANIC EXIT DEVICE HEAD AND NIGHTLATCH INSTALLATION



- Determine length of tailbar suitable for install and cut if required. Ensure that tailbar does not protrude by more than 8-10mm from the mounting plate on the other side of the door.
- Secure the nightlatch assembly and mounting plate with M5 countersunk screws provided.
- Gently tap the plastic adapter with a rubber mallet into the spindle hub of the panic exit head until it sits flush with the hub. Ensure the slot in the adapter is horizontal.
- Install the panic exit head onto the door with four $\text{\O}4.8 \times 25\text{mm}$ pan head screws through the mounting plate.
- Retract the latch fully to fit the cover on the head. Secure the cover with 2 fixing screws.

3

HINGE SIDE PLATE FITMENT

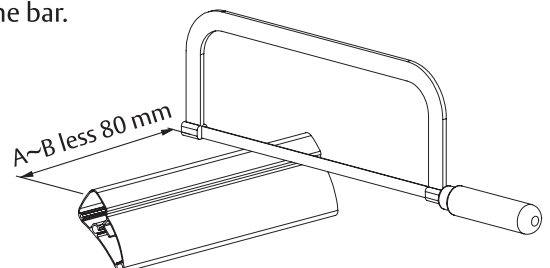


- Install two middle screws through the back plate into pilot holes from template 2.
- Do not drive the screws fully, leaving a 5mm gap between screw head and plate.

4

PANIC EXIT DEVICE BAR CUTTING

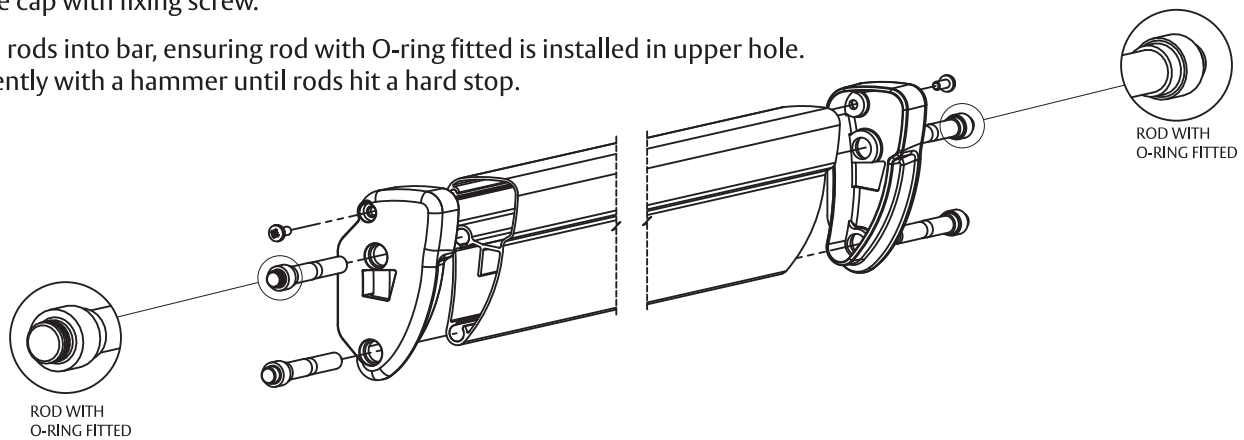
- Measure distance A~B, cut panic exit device bar to A~B less 80mm.
- Ensure cut is square and all debris is removed from the bar.



5

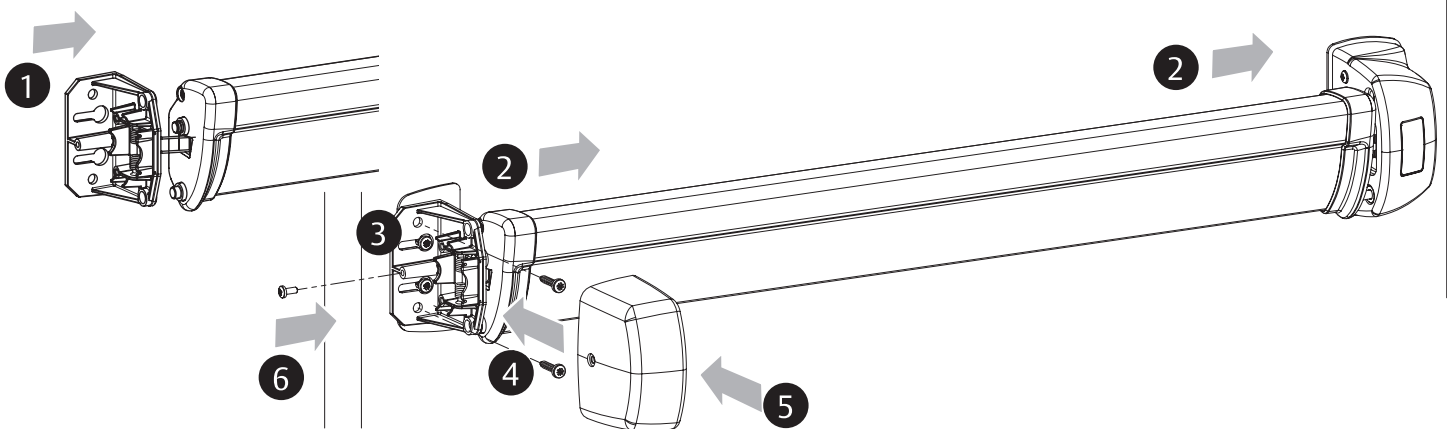
BAR ASSEMBLY

- Fit caps onto bar on either side.
- Secure cap with fixing screw.
- Install rods into bar, ensuring rod with O-ring fitted is installed in upper hole. Tap gently with a hammer until rods hit a hard stop.



6

BAR INSTALLATION

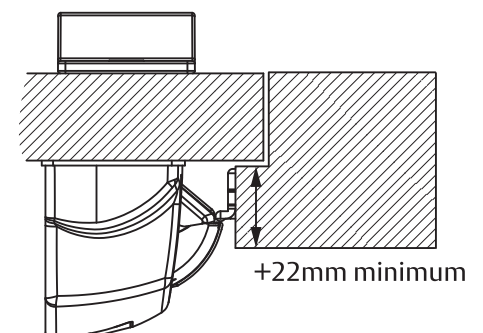


- Fit hinge side mechanism into bar ensuring that the spring is engaged in the square hole and lower rod is fitted into its matching hole.
- While aligning the front rods into the panic exit head, fit the hinge side mechanism's keyhole fittings over the screws and push entire mechanism towards the nightlatch.
- Tighten the screws and test the panic exit device function.
- Drill two $\text{\O}3 \times 25$ pilot holes and fit screws to secure the hinge side mechanism.
- Fit cover and adjust positioning to align cover and mounting plate if necessary. Secure cover with fixing screw.

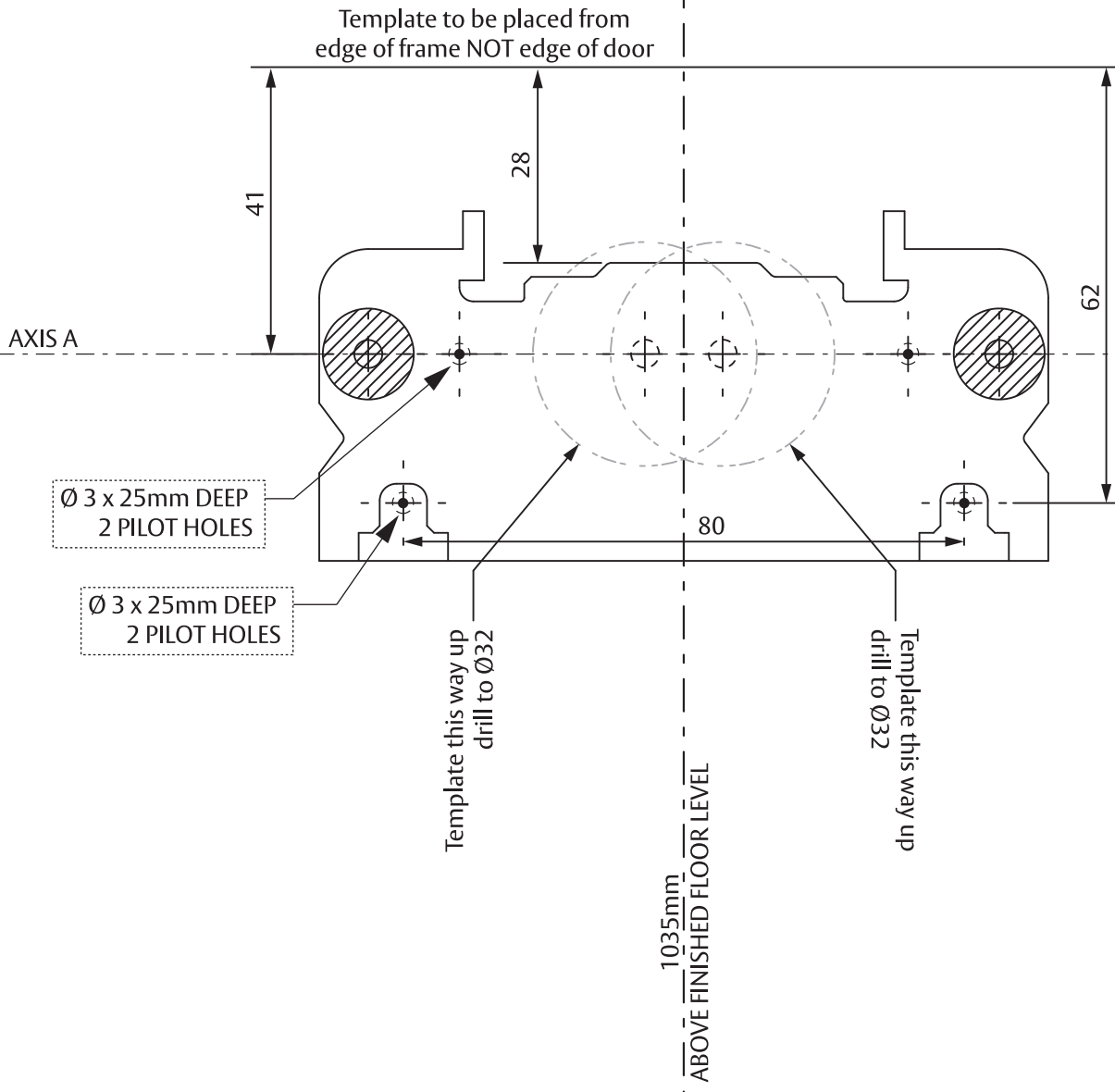
7

STRIKE INSTALLATION

- Please note that this strike installation is for rebated doors only, minimum 22mm thickness. If install doesn't apply, please refer to original FLUID panic exit device instruction sheets.
- Ensure height of centre of strike is in line with Axis C.
- Test assembly to ensure that panic exit device releases easily when bar is depressed.



TEMPLATE 1



TEMPLATE 2

