

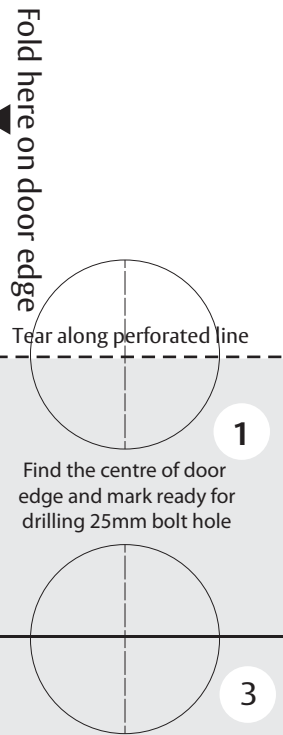
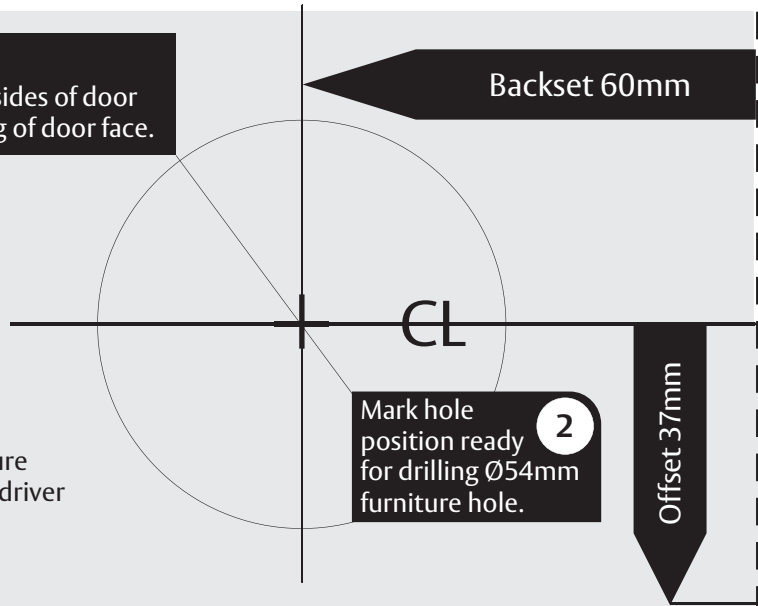
## Door and pull preparation template

Q50047 - 0120

Template

**Important Note**  
Drill hole from both sides of door to prevent splintering of door face.

- Tools Required**
- Ø54mm Hole saw
  - Ø25mm Spade bit
  - Ø2mm Drill bit
  - Power drill
  - 25mm Chisel
  - Pencil
  - Ruler or tape measure
  - Phillips head screw driver



Please ensure that all necessary safety precautions are taken when installing this product.

## Privacy and Entrance Set door preparation and bolt with pull installation (steps 1 - 11)

**1**

900mm

Mark line on the door face approximately 900mm from the floor. Tear along perforated line on template. Fold page along --- dashed line and place fold on door edge. Align CL with marked line on door face.

**2**

1. Find centre of door edge and mark ready for drilling Ø25mm latch hole.  
2. Mark hole position ready for drilling Ø54mm furniture.

**3**

If using a pre-prepared door, use the template to mark the location of the second Ø25mm hole.  
(Go to step 6)

**4**

Drill Ø2mm pilot hole squarely through the door.

**5**

1. Drill Ø25mm latch hole to depth of 70mm, ensure hole is drilled squarely.  
2. Drill a Ø54mm furniture hole, from both sides of door to prevent splintering.

**6**

3. Drill the second Ø25mm bolt hole 70mm deep.

**7**

Insert bolt into Ø25mm holes, mark around latch face plate.

**8**

Chisel out recess to suit face plate. Face plate must be flush with door face.

**9**

Insert bolt, then drill Ø2mm pilot holes and affix with screws provided.

**10**

Press the retractable door pull button to release it. (Press it to reset).

**11**

Pull on the retractable door pull to remove door from cavity.

Find centre of door edge and mark ready for drilling Ø25mm bolt holes

Fold here on door edge

## Privacy and Entrance Set installation (steps 12 - 20)

<p>Furniture assembly.</p>	<p>Assembly shows both sides interlocking.</p>	<p><b>Internal Furniture</b> Engages with the tailbar from the bolt.</p>	<p><b>Internal Furniture</b> in place.</p>	<p><b>External Furniture</b> Engages with the tabs on the bolt.</p>
<p>Fit internal furniture side first.</p>	<p>If door is less than 33 mm thick use packers. Fit the packers to the inner faces of the furniture, against the door face.</p>	<p>Use 25mm Screw Trilobe screw (Thread forming screw)</p>	<p>Test bolt with the key, or coin edge in privacy version.</p>	

## Strike preparation and installation (steps 21 - 31) Door stop installation (step 32)

<p>Partially close door and mark a horizontal line, centre of the latch bolt on the door jamb. Extend horizontal line along the inside face of the door jamb.</p>	<p>Mark a vertical line down the door jamb, along the edge of the door.</p>	<p>Measure and halve the door thickness.</p>	<p>From the vertical line on the door jamb, measure and mark half the door thickness. Draw a second line.</p>	<p>Drill Ø25mm hole 20mm deep.</p>
<p>Strike basin measures 35mm high.</p>	<p>Mark two lines symmetrically either side of the Ø25mm hole centre line.</p>	<p>Chisel out basin recess to depth of hole.</p>	<p>Fit and mark around strike plate, taking care to keep vertical.</p>	<p>Chisel out strike plate recess. Strike plate must be flush with jamb.</p>
<p>Drill Ø2mm pilot holes, affix with screws provided.</p>	<p><b>A door stop is recommended on the external door face when using a key locking application.</b></p>			