

Thank you for choosing the Lockwood CL-150S electric Cabinet Lock. This installation guide and user manual will enable you to install and operate the product safely and to its full potential. Please ensure you read this manual completely before using the product.

The Lockwood CL-150S electric Cabinet Lock is a compact, versatile and flexible locking solution for Lockers, Cupboards, Drawers and a variety of applications using swing or sliding doors and drawers.

The CL-150S also provides a spring release function negating the need for handles on smaller lockers and cabinets as it pops open the door on release. The Cabinet Lock also includes Lock State Monitoring, and 12 or 24VDC operation.

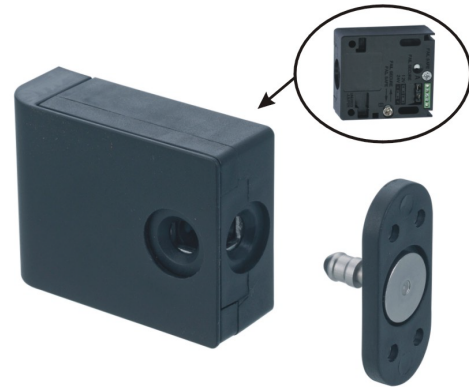
With a Holding Force of 100kg, the CL-150S is the ideal electric locking solution for a host of applications and can be used in conjunction with most Access Control, Intercom, Keypad or Card Reader systems. For added flexibility in different applications and door or cabinet styles, the compact locking mechanism on the body also allows for the Strike Plunger to engage into either the Edge or the Top of the lock body.

Important Safety Instructions and Warnings

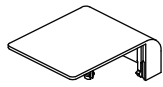
- Read and follow all instructions prior to installing and using this product.
- These instructions should be kept by the end user for future reference.
- These instructions or a full copy of these instructions should be provided to the user.
- Obey and heed all warnings on the product and in the manual.
- Ensure the functionality, specification, and configuration of the CL-150S electric Cabinet Lock is befitting for the intended application and environment. This may include in the event of a power failure and the ability to access the cabinet.
- Do not use this unit near excess water or moisture not typical to an indoor environment installation practices i.e., installed in an indoor cabinet or locker.
- Clean with a dry cloth only, do not use chemicals.
- Avoid prolonged exposure to direct sunlight or heat.
- This product is not suitable for environments with explosive or flammable atmospheres.
- Only use attachments, accessories and fixings as specified by the manufacturer.
- Refer all servicing to qualified service personnel. Servicing or replacement is required when the unit has been damaged. This may include either mechanical or electrical defects. This may also include ingress of liquid spilled or objects that have fallen into the unit or if the unit has been exposed to excessive moisture and no longer operates normally. Do not attempt to service this product yourself.
- Opening or removing covers may expose you to dangerous voltages or other hazards.
- To prevent risk of fire or electric shock ensure the power supply or system is suitable for this product in addition to any other units already sharing the same power supply or system.
- Do not let objects or liquids enter the product as they may prevent correct operation (possibly preventing door access or short-out parts that could result in a fire or electric shock).
- Modification of this product in any way may affect both its functionality and compliance status and will void any warranty and claim to compliance or ratings/performance.
- Ensure the correct power supply is connected. DO NOT connect AC mains power to this product.
- Ensure that the lock trigger DC voltage is only applied for less than 10 seconds per operation. Excessive application of the DC input may result in the product being damaged or not functioning correctly.

Key Features

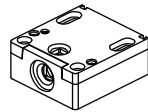
- Spring Loaded Release
- Lock Status Monitoring with NO/NC Output
- 12 or 24VDC Operation
- 100kg Holding Force
- Top or Edge Strike Plunger engagement
- Fail Secure configuration



Included Parts & Accessories (Supplied)



Lock Body Cover
x 1



Lock Body
x 1



Strike Plate with
Plastic Plunger
x 1



Metal Plunger
x 1



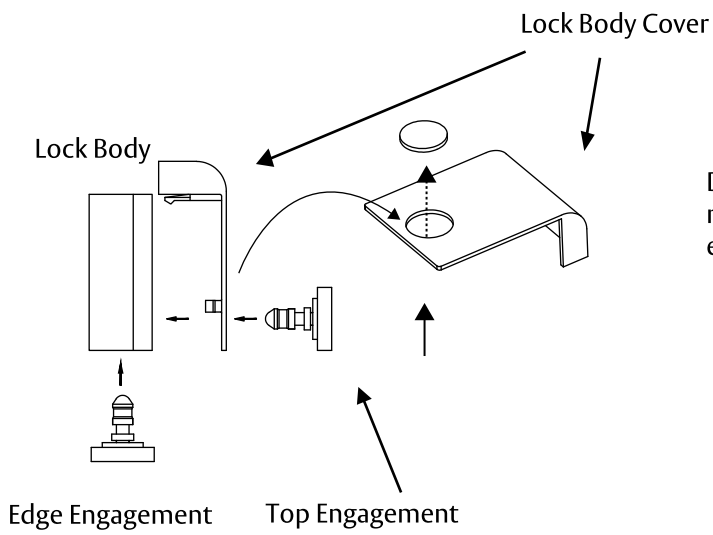
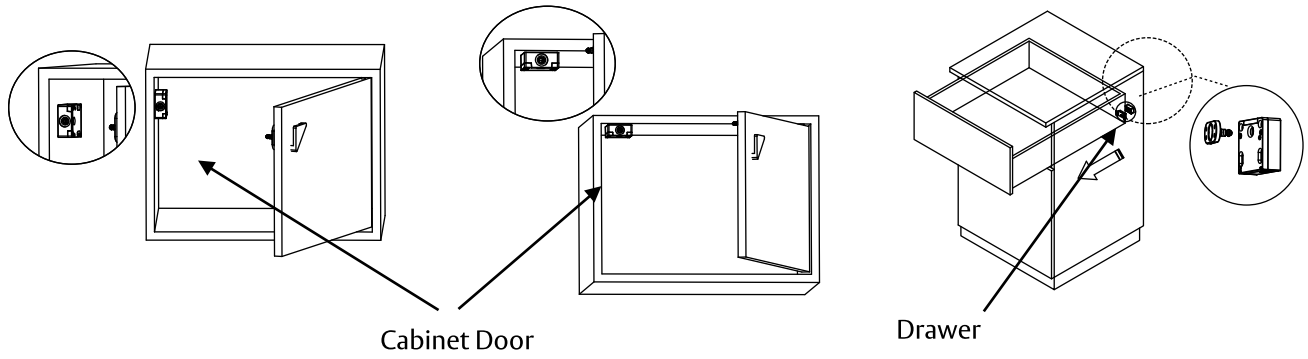
M3.5 x 30mm
x 4



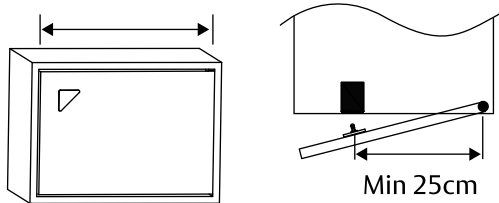
M3.5 x 16mm
x 4

Specifications

Operating Voltage	12 or 24VDC (+/-15%) Applied for a maximum period of 10 seconds to change the lock state	Dimensions (mm) Unit : mm
Operating Current	900mA (+/-15%) @ 12VDC 450 mA (+/- 15%) @ 24VDC	
Door Position Output	COM/NC/NO	
Operating Mode	Fail Secure	
Maximum Holding Force	100Kg (220lbs)	
Minimum Door Width	25cm	
Temperature Range	-10°C to +70°C	
Humidity	Maximum of 85% RH	
Weight	110g	
Weather Rating	Indoor only	
IP Rating	IPX0 – No Protection	
Dimensions	67.5 L x 45W x 21.5 Hmm (plunger engaged)	

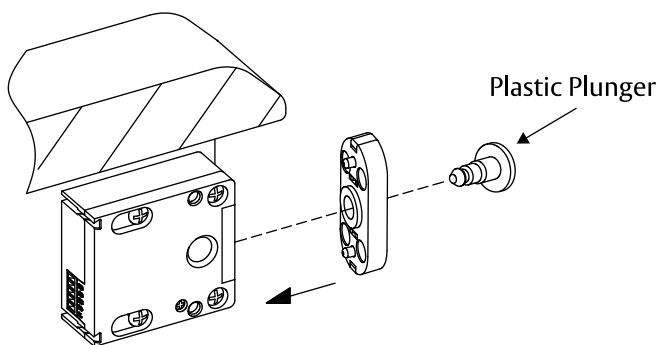


Determine the mounting and Strike Plunger engagement mode as there are two options, Edge and Top. For Top engagement, remove the bung in the Lock Body Cover.



Door Width

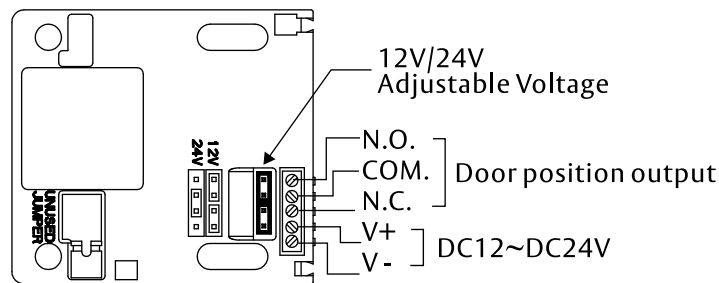
For swing doors, the minimum distance between the hinge and Cabinet Lock is 25cm.



To avoid locking the door or drawer during setup, ensure use of the supplied Plastic Strike Plunger whilst setting up and testing.

Wiring Connections

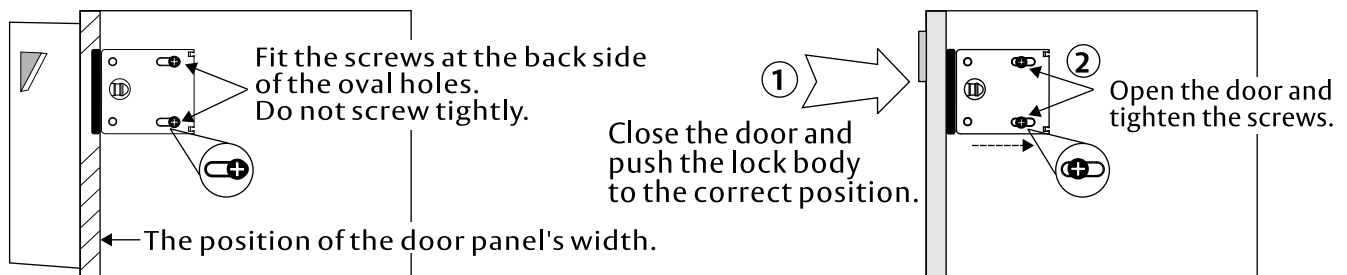
Before connecting power, check voltage and polarity of the power supply. An incorrect setting could damage the Cabinet Lock.



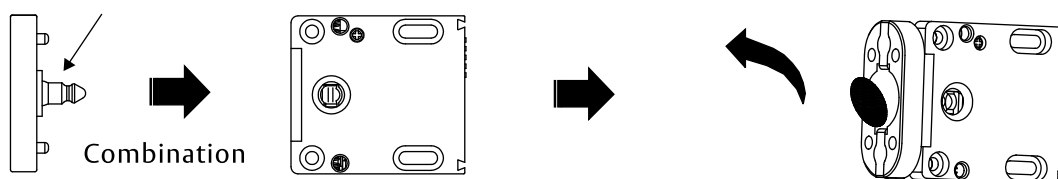
1. Set Input Voltage Links as required (12VDC default)
2. Door Position Output is shown when Sealed (Door Closed)

Installation Steps

1. Ensure Voltage selection links are set as per the input voltage of the installation.
2. Ensure the Plastic Plunger is in the Strike Plate and engaged into the lock in the required configuration.
3. After confirming the approximate closing position of the door/drawer, mount the Lock body into the cabinet using the two screws, ensuring the screws are located at the back side of the elongated slots in the body.



4. Remove the Double-Sided tape cover from the back of the Plastic Plunger



5. Close the Cabinet Door/Drawer so that it contacts the Strike Plate with the Plastic Plunger engaged in the lock. On contact, the Strike Plate and Plunger should stick to the door/drawer so that when the door/drawer is opened, the plunger position is accurate.
6. Tighten the Cabinet Lock Screws and fit two temporary screws into the Strike Plate. Again, close the door/drawer to ensure the Plunger engages in the lock and door/drawer closes correctly and fully.
7. Once adjustments have been made and Plunger engagement is correct, remove the Strike Plate and replace the Plastic Plunger with the included Metal Plunger. Re-install the Strike Plate, using all four screws, complete with the Metal Plunger, on the door/drawer.
8. Complete wiring termination of the Cabinet Lock, including the Door Position Monitoring Output.
9. As the Cabinet Lock is configured for Fail Secure (PTO) operation only, before closing the door/drawer once the Metal Plunger has been installed in the Strike Plate, ensure that power can be applied to the lock for Unlocking, or the door/drawer cannot be opened.
10. Fit the Lock Body cover.

Troubleshooting

Question	Answer
Lock won't release	<ul style="list-style-type: none">• Check Voltage at lock to ensure it is present and within the required operating specifications• Check voltage polarity to ensure correct connection• Check voltage selection links are set correctly for the supplied voltage
Lock has no strength, is easy to force open	<ul style="list-style-type: none">• Check that Metal Strike Plunger has been fitted, not the plastic one• Check input current and voltage to ensure they are within specification• Check Voltage selection links are set correctly
Door Position Output not operating	<ul style="list-style-type: none">• Ensure correct terminals are being used, either COM & NC or COM & NO• Ensure Plunger is correctly and fully engaged into the lock body
Plunger will not engage into lock	<ul style="list-style-type: none">• Check alignment of the Plunger and lock body• Ensure distance between door hinge and the Cabinet Lock is no less than 250mm• Possibly install Plastic Plunger and double-sided tape to test alignment

Maintenance

Clean with a dry cloth only, do not use chemicals.

RCM Declaration of Conformity (DoC)



Hereby, ASSA ABLOY Australia Pty Ltd declares that the CL-150S Cabinet Lock is in compliance with the Regulatory Compliance Mark (RCM) for Australia and New Zealand.

Faults, Repairs & Returns

This product contains no user serviceable parts. Please contact your local supplier.

Storage and transport

The product should be transported and packed in its original packaging.

Dismantle & environment

Dispose of packaging and product in a responsible manner, this may include recycling at your nearest recycling centre. Including the re-use and recycling of the materials & packaging of this product. Contact your local authority to find the nearest electrical and electronic equipment waste disposal point. This product must not be disposed of with regular household waste.