

# Lockwood MTL™800 Restricted Keying



We take the worry out of  
protecting what's valuable to you.  
Lockwood: *no worries*®



ASSA ABLOY

25YEAR  
MECHANICAL  
WARRANTY

[www.lockweb.com.au](http://www.lockweb.com.au)



# Mechanical locking systems. Secure, reliable and convenient!



ASSA ABLOY is the global leader in door opening solutions and the company behind the iconic Australian brand Lockwood.

Lockwood is the leading brand in the Australian locking industry when it comes to locking systems and provides premium commercial and residential products for a wide range of applications. With a well-established reputation for high quality products, this iconic brand provides a wide range of locking solutions to residential housing, commercial building and industrial application markets, supported by an extensive distribution and after-sales support network.

Nowadays the key security in a locking system and the protection against conventional intrusion methods are most important for system users. The need to provide innovative, secure and reliable keying systems has never been more important! Lockwood MTL™800 platform is designed for premium protection, flexibility, and convenience with customers' needs in any industry in mind. MTL™800 platform is patent protected in Australia until 2039 and existing MT5+ systems can be easily migrated to MTL™800.

The patented platform provides highest possible level of protection by combining protective elements to create a triple locking mechanism, superior key control, and extensive master-keying capabilities.

The precision of Lockwood's mechanical MTL™800 cylinders offers service you can rely on. It provides the ultimate key control, protection against unauthorised openings, key copying and cylinder manipulation, thus providing ultimate security for your property and possessions. All this plus rock solid patent protection well into the future.



# The New Concept

## Three mechanisms for more security

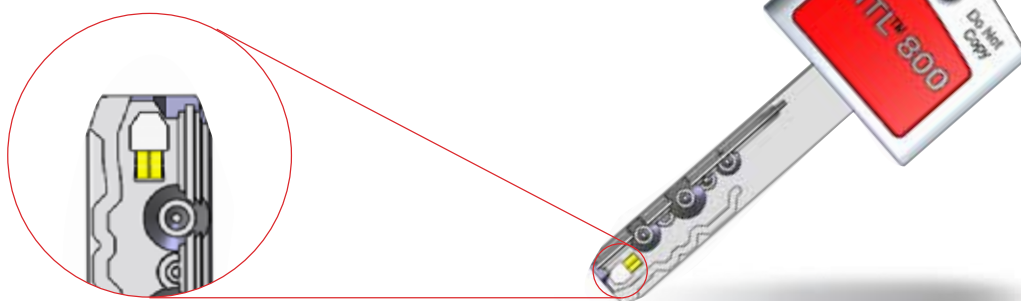


The MTL™800 locking system from Lockwood provides peace of mind!

To guarantee the technical key security of a mechanical locking system it is necessary to select a system that is protected by key patents and also offers a high technical key copy protection. The new MTL™800 locking system from Lockwood will achieve both of these.

key duplication via the revolutionary double alpha spring. The patented platform combines protective elements to create a triple locking mechanism, superior key control, and extensive master-keying capabilities.

Lockwood MTL™800 provides the highest possible level of protection against illegal



Double Alpha Spring

### 1. Double alpha spring

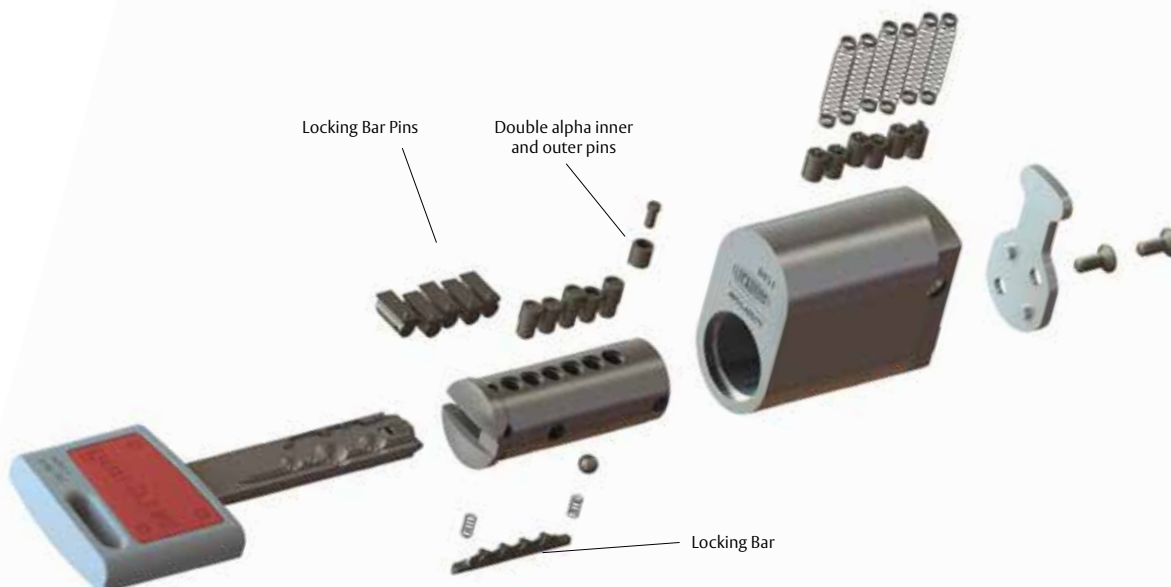
A patented moving element on the key blade's tip engages with two unique pins at the rear of the cylinder, creating an additional shear line.

### 2. Telescopic pin

Based on Mul-T-Lock's proven telescopic pinning technology.

### 3. Locking bar

The locking bar mechanism is the third technology featured in the MTL™800 and MT5+ cylinders. Correct alignment of the locking bar pins depends upon the correct combination key being inserted into the cylinder. The milled pattern which runs along the length of the key interacts with the top bar and its horizontal pins or also called finger pins, creating the required shear line.



# Lockwood MTL™800

Originals are hard to copy

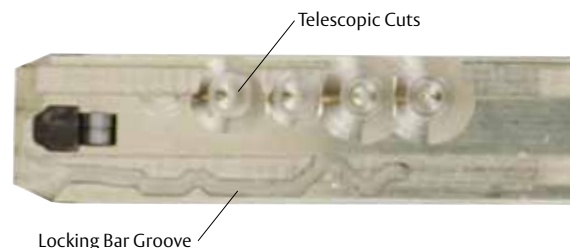


ASSA ABLOY

The components of the MTL™800 security system include the MTL™800 key and the MTL™800 KC5 cutting machine.

## MTL™800 key

All MTL™800 products have a double-sided unique MTL™800 key. One set of cuts are for the telescopic pin mechanism and the other set of cuts, the milled pattern, is for the locking bar in MTL™800 products. The MTL™800 combination provides enhanced key security and a higher manipulation resistance.



MTL™800 cylinders with reversible key function. The key always fits, regardless of which direction it enters into the cylinder.



The KC5 machine –  
For a perfect cut key  
every time!

## The KC5 key cutting machine

Lockwood MTL™800 keys can only be cut through an authorised Lockwood MTL™800 agent on a dedicated Lockwood KC5 key cutting machine. The super smart KC5 machine is electronically controlled and self-calibrating meaning you get a perfect key every time!





# MTL™800 cylinders

For every application



Lockwood MTL™800 cylinders are available for a wide variety of applications. Whatever your needs may be, we will have a solution to suit.



Double cylinder



Half cylinder



Cylinder padlock



Lock set cylinder



Lockwood oval cylinder

The cylinder type is the externally-visible shape of a cylinder.

# Lockwood security solutions

More than just a keying system



## In the centre of Lockwood security:

Premium quality MTL™800 locking cylinders for any purpose.

Lockwood offers a versatile range of possible applications of mechanical MTL™800 cylinders combined with other Lockwood products. These locks are best installed by combining them with high quality MTL™800 cylinders and can thus also be integrated into locking systems.

Outlined below is a small selection.

Lockwood 005 Double Cylinder Deadbolts provide security and safety at home or the office.

## Lockwood 005 Double Cylinder Deadbolt

Lockwood's high security deadbolt range offers exceptional safety and security for your home and family. With Lockwood's unique, patented LockAlert® and SafetyRelease™ functions, this is the pinnacle in deadbolt security products. Available in either a round or square rose and with 5 different finishes including Stainless Steel.

Lockwood 930 Series Locksets are suitable for commercial applications such as hospitals and schools.

## Lockwood 930 Series Key in Lever

Perfect for high traffic areas the Lockwood 930 series of commercial locksets are produced from high purity zinc alloy making sure your lockset will provide many years of trouble free use. The Lockwood 930 is available in a comprehensive range of functions and attractive finishes.

Lockwood Panic Exit Devices are suitable for stadiums.

## Lockwood FLUID Series Exit Device

The next generation in the Lockwood Panic Exit Device range, the FLUID Series provides for the fundamental means of escape whilst offering a completely unique locking mechanism and design aesthetic

For more information on Lockwood products available: [lockweb.com.au](http://lockweb.com.au)  
1300 LOCK UP (1300 562 587)





Lockwood is the leading brand in the Australian locking industry. With an established reputation for high quality products, this iconic brand provides a wide range of locking solutions to residential housing, commercial building and industrial application markets. Lockwood is supported by an extensive distribution and after-sales support network. Our customers include retailers, architects, trade and industrial personnel, locksmiths and security dealers.



ASSA ABLOY is the global leader in door opening solutions, dedicated to satisfying end-user needs for security, safety and convenience.

ASSA ABLOY is represented in all major regions, in both mature and emerging markets, with leading positions in Australia, Europe and North America.



#### The Lockwood 25 Year Mechanical Warranty

Our belief that we manufacture the finest premium products available in today's market place is backed by the Lockwood 25 Year Mechanical Warranty, ensuring that Lockwood continues to keep Australians safe by delivering security and peace of mind.

For warranty terms and conditions, please visit [www.lockweb.com.au](http://www.lockweb.com.au) or call **1300WARRANTY**

**ASSA ABLOY Australia Pty Ltd**  
235 Huntingdale Road  
Oakleigh, Victoria, 3166  
Australia

**1300 LOCK UP (1300 562 587)**  
[lockweb.com.au](http://lockweb.com.au)

**ASSA ABLOY New Zealand Ltd**  
6 Armstrong Road  
Albany, Auckland, 0632  
New Zealand

[info.nz@assaabloy.com](mailto:info.nz@assaabloy.com)  
Telephone +64 9415 7111  
[assaabloy.co.nz](http://assaabloy.co.nz)

